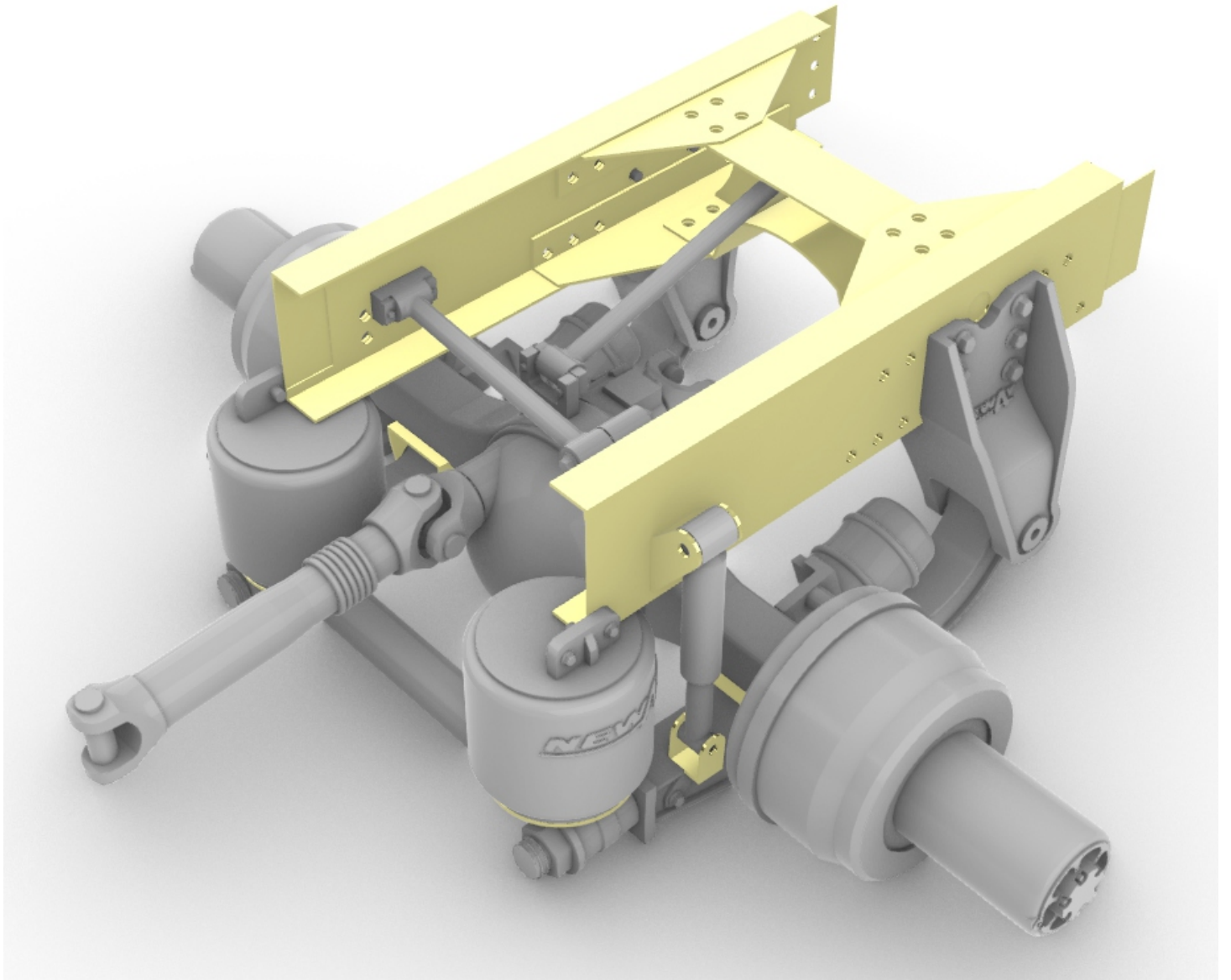


A&N Model Trucks



Tri-drive AD-390 suspension
(day cab)

Made in Latvia

Warning!

Read carefully this instruction and please follow it during assembling, otherwise you could face problems with assembling the model.


Photo-etched parts have sharp edges, please be careful.

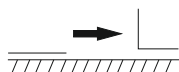
This model kit contains very small parts and is not suitable for children.

This model kit is for advanced modellers only!

Symbols:

 - glue parts;


 - do not glue parts;

 - bend parts;

 - attention;

 - moving parts;

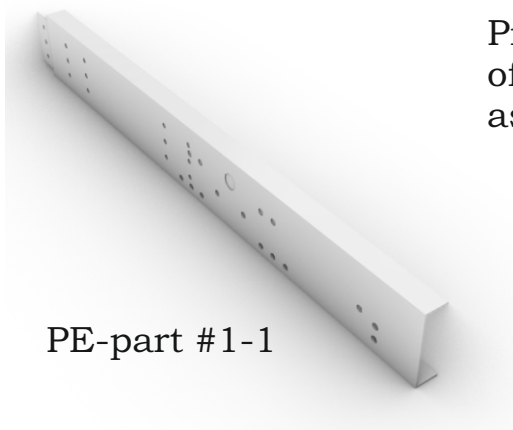
 - your choice;

 - cut;

A1 - apertures' number;

Tri-drive AD-390 suspension (day cab)

1.



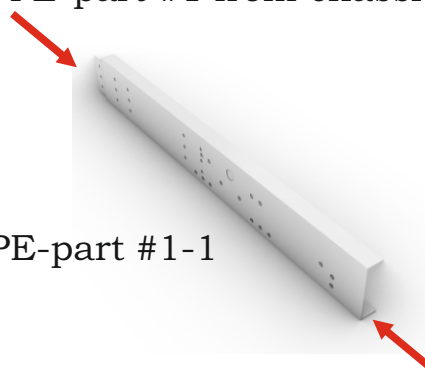
PE-part #1-1

2.

Proceed on steps 1-5
of chassis kit
assembling instruction.

3.

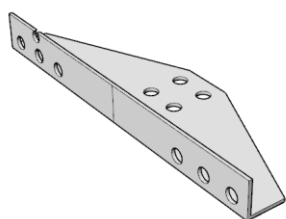
PE-part #1 from chassis kit



PE-part #1-1

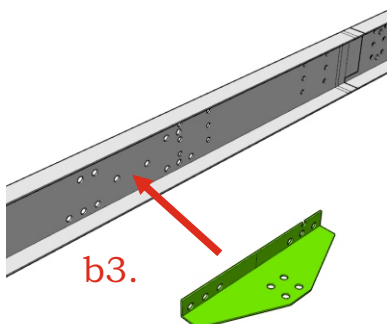
PE-part #3 from chassis kit

4.



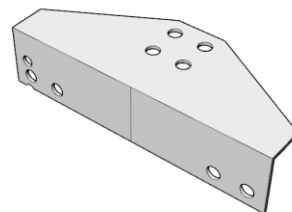
PE-part #1-6

5.



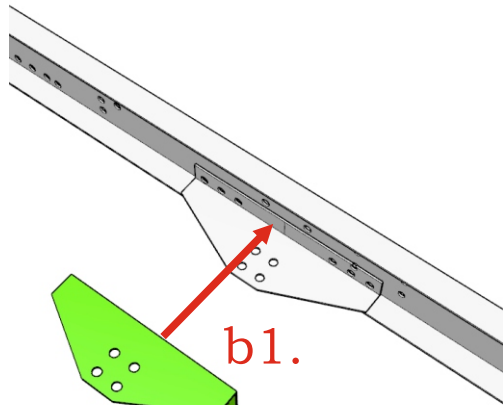
b3.

6.



PE-part #1-8

7.



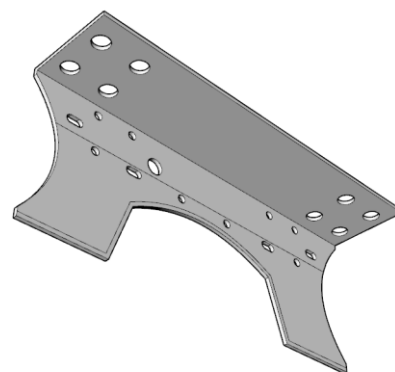
b1.

8.

Proceed on steps 7-14
of chassis kit
assembling instruction.

Then reapeat for right side.

9.

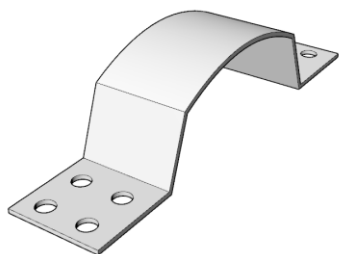



PE-part #1-10

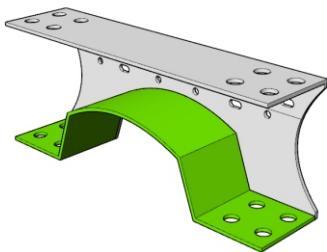
Tri-drive AD-390 suspension (day cab)

10. 

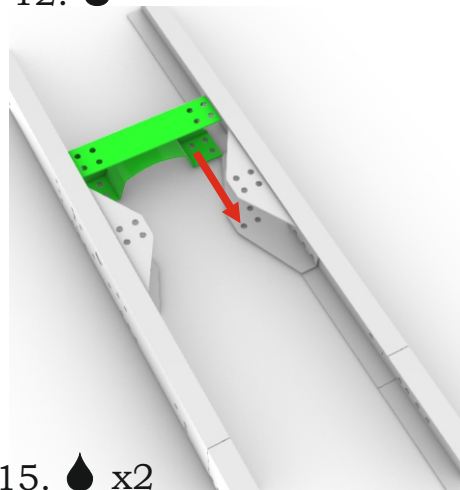
PE-part #1-12



11. 

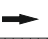


12. 

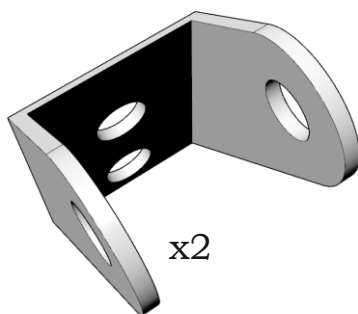


13.

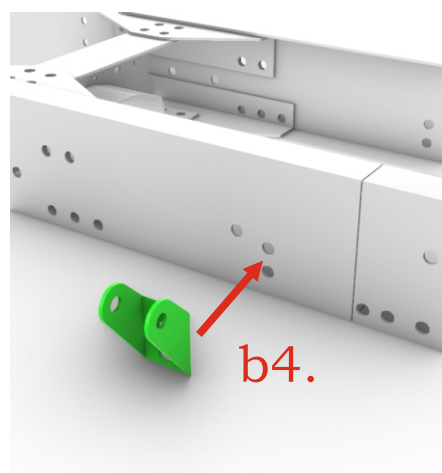
Proceed on steps 16-29
of chassis kit
assembling instruction.


14. 

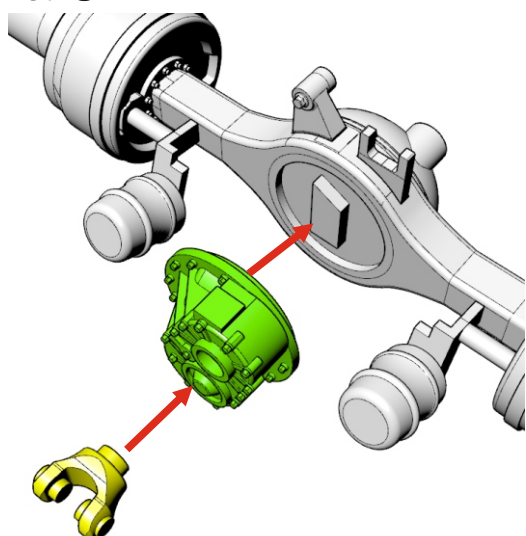
PE-part #1-13




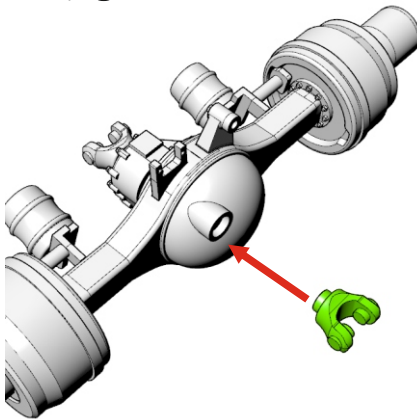
15.  x2




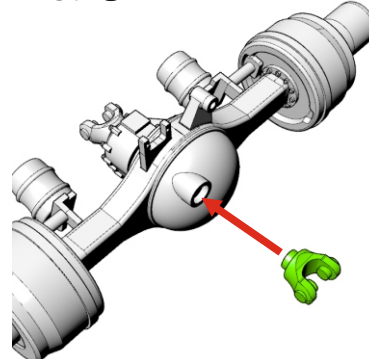
16. 



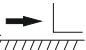
17. 




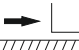
18. 



Tri-drive AD-390 suspension (day cab)

19. 

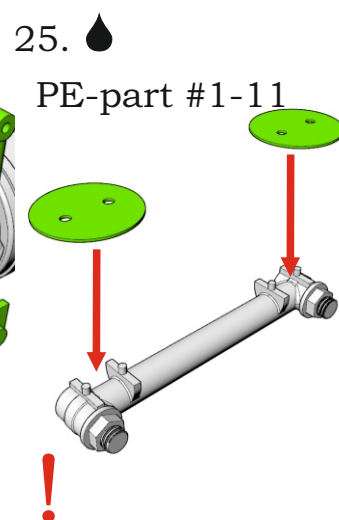
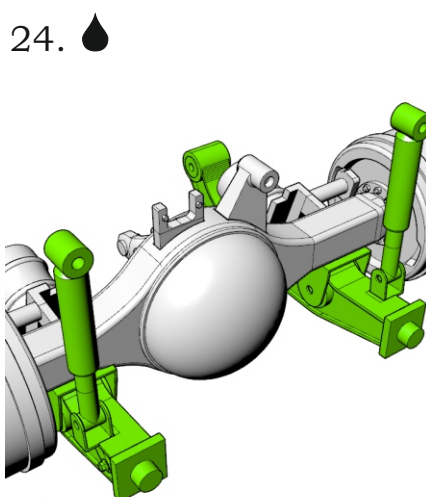
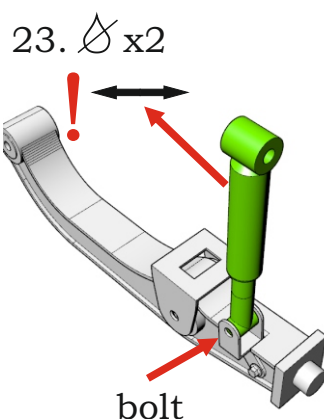
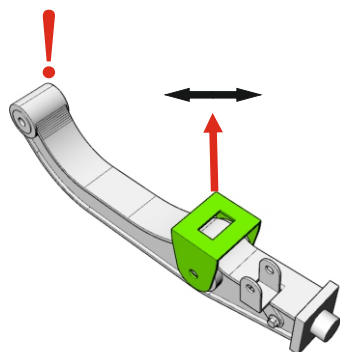
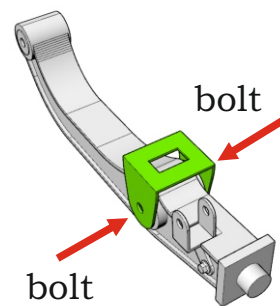
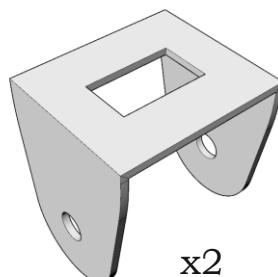
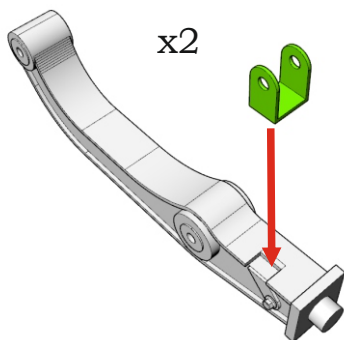
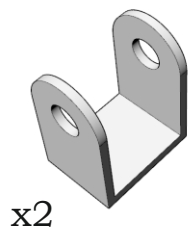
20. 

21. 

22.  x2

PE-part #1-14

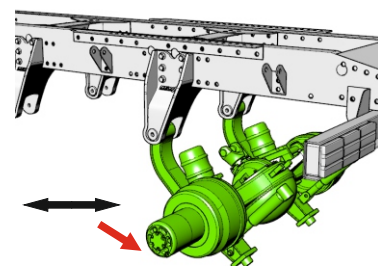
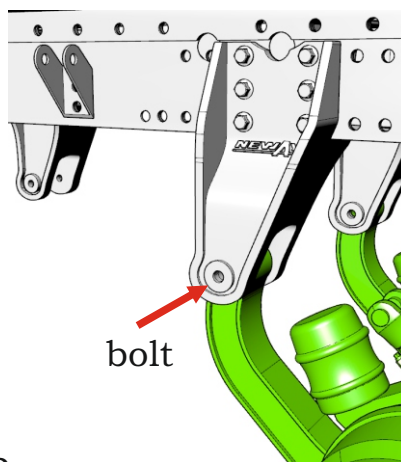
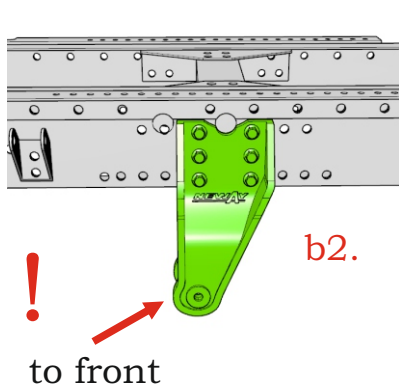
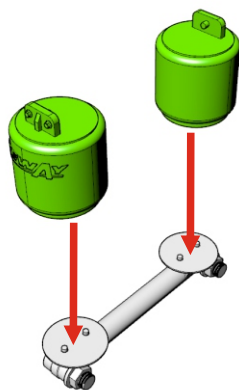
PE-part #1-9



26. 

27.  x2

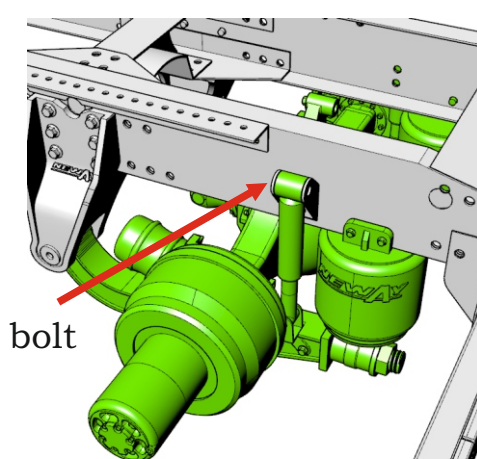
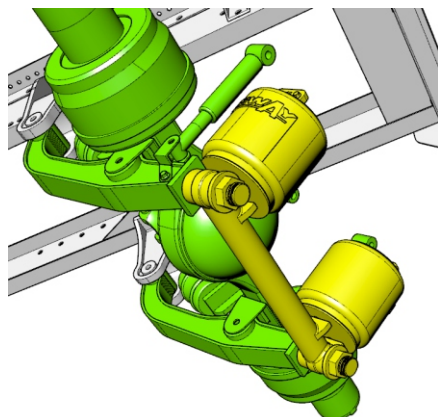
28.  x4



29.  x2

30.  x2

30.



Proceed on step 36 of chassis kit assembling instruction.