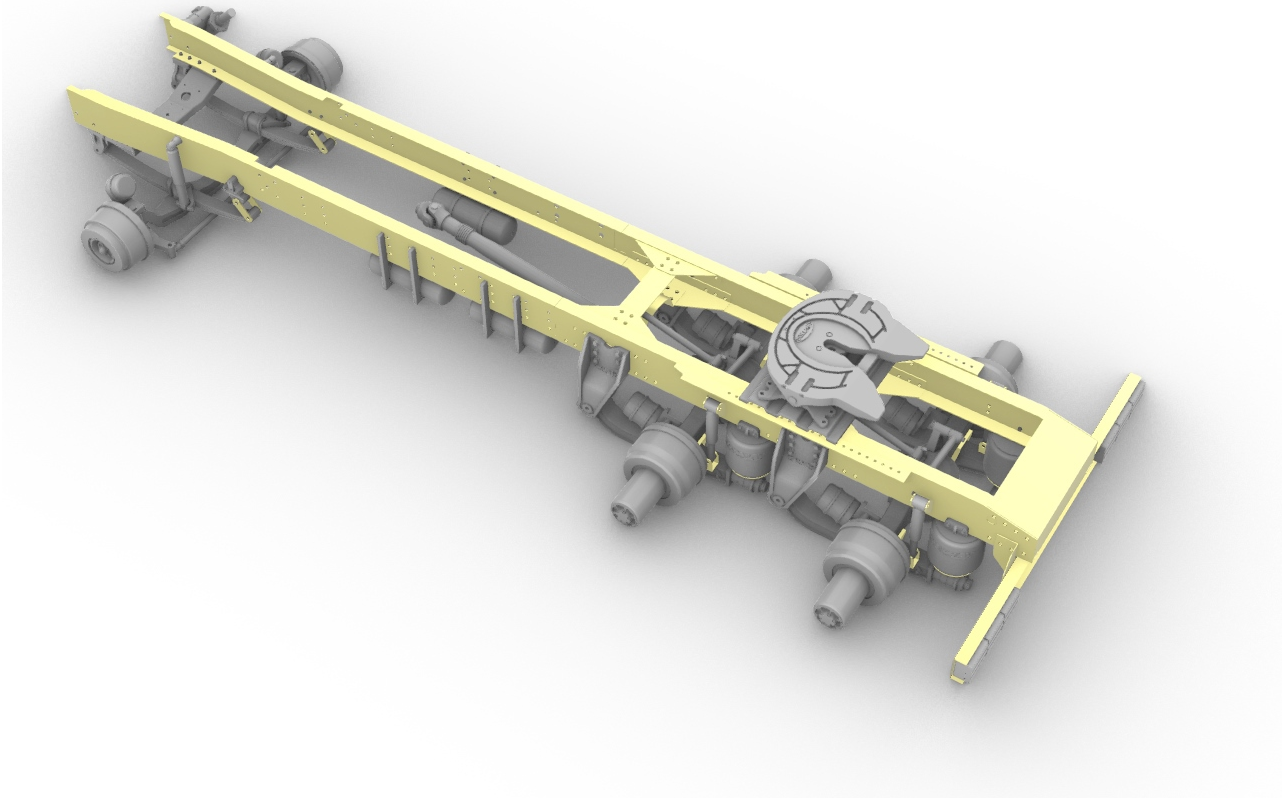


A&N Model Trucks



Chassis for Aussie
Titan truck
(day cab)

Made in Latvia

Warning!

Read carefully this instruction and please follow it during assembling, otherwise you could face problems with assembling the model.


Photo-etched parts have sharp edges, please be careful.

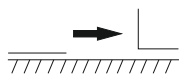
This model kit contains very small parts and is not suitable for children.

This model kit is for advanced modellers only!

Symbols:

 - glue parts;


 - do not glue parts;

 - bend parts;

 - attention;

 - moving parts;

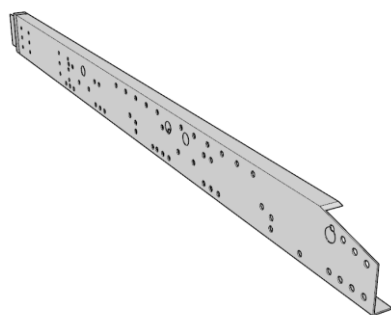
 - your choice;

 - cut;

A1 - apertures' number;

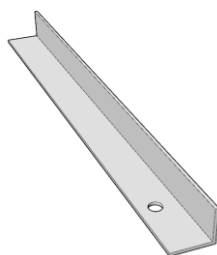
Chassis for Aussie Titan truck (day cab)

1.



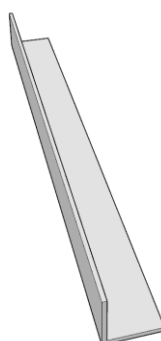
PE-part #1

2.



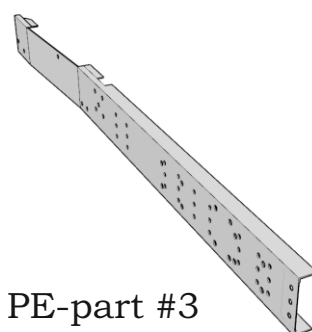
PE-part #18

3.



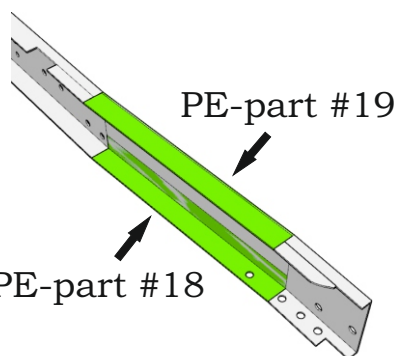
PE-part #19

4.

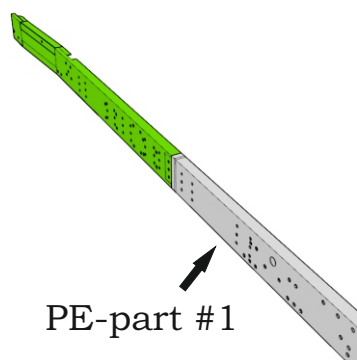


PE-part #3

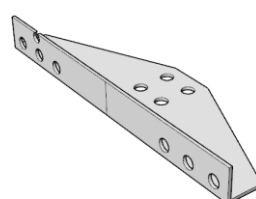
5.



6.

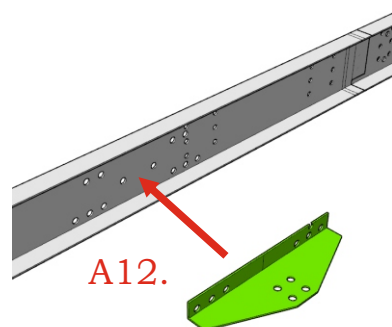


7.

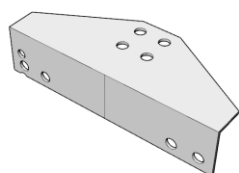


PE-part #8

8.

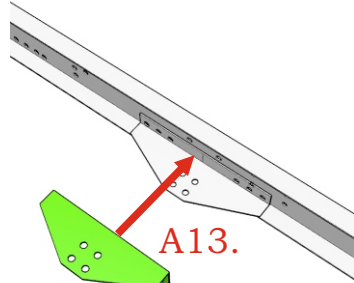


9.

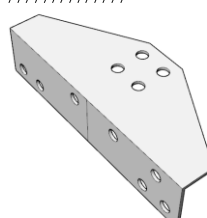


PE-part #12

10.

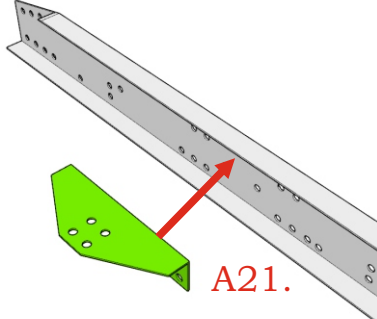


11.

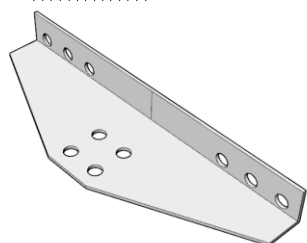


PE-part #9

12.

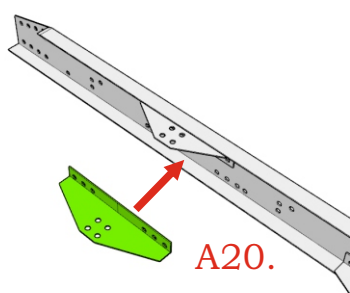


13.



PE-part #5

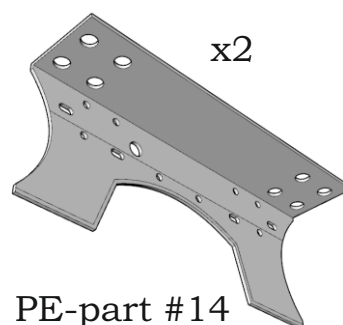
14.



15.

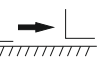
Repeat steps
1-14 for
right side.


16.




PE-part #14

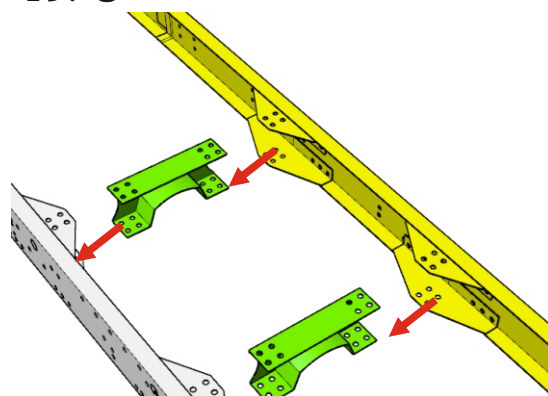
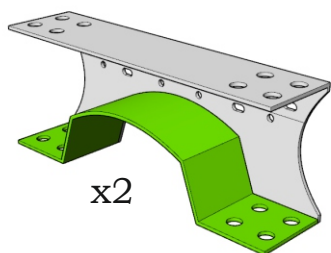
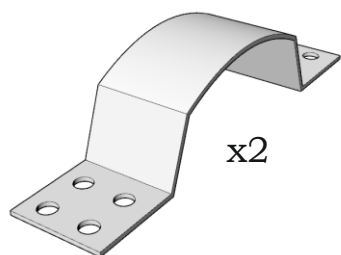
Chassis for Aussie Titan truck (day cab)

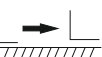
17. 

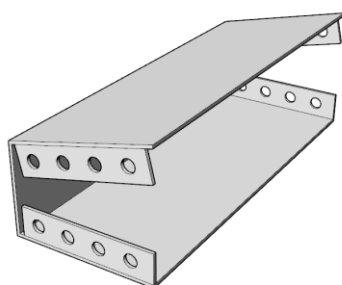
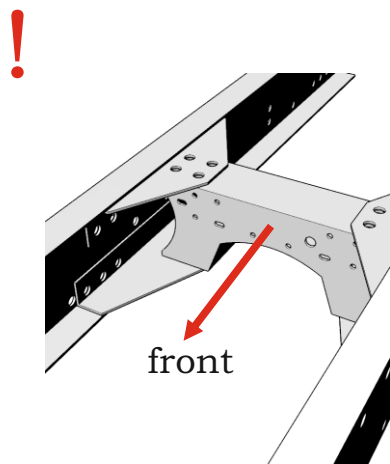
18. 

19. 


PE-part #16

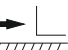


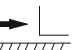
20. 




PE-part #22

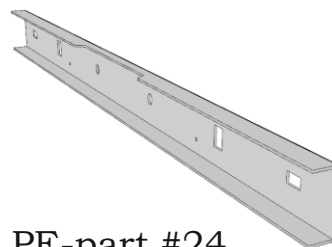
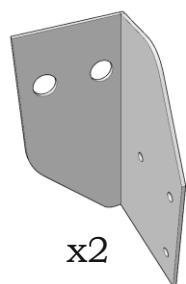
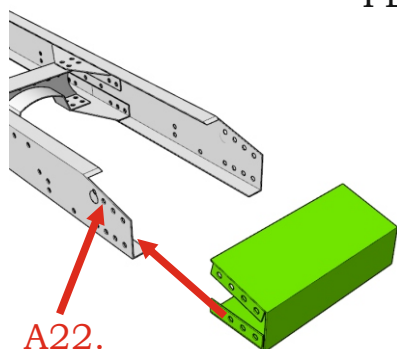
21. 

22. 

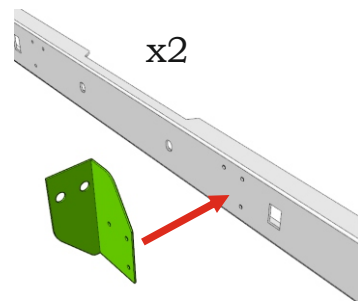
23. 

24. 

PE-part #23



PE-part #24



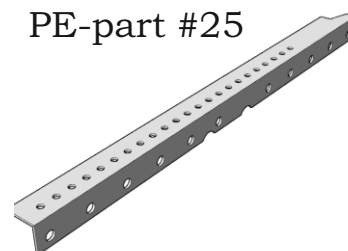
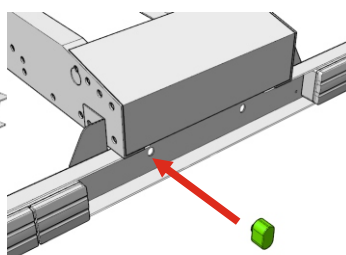
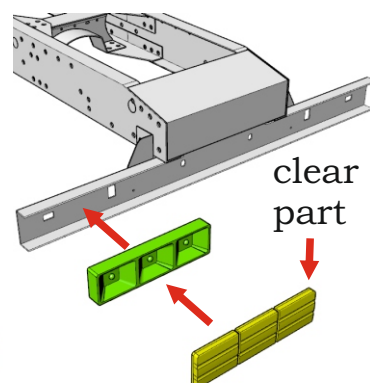
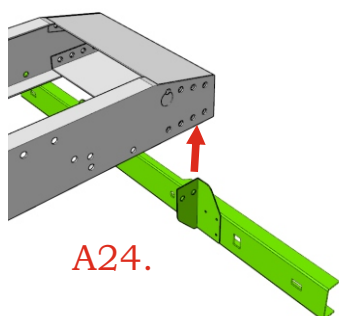
25. 

26.  x2

27.  x2

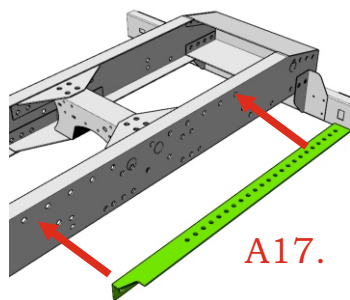
28. 

PE-part #25

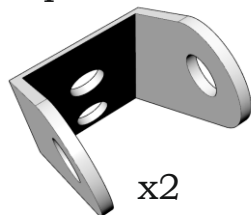


Chassis for Aussie Titan truck (day cab)

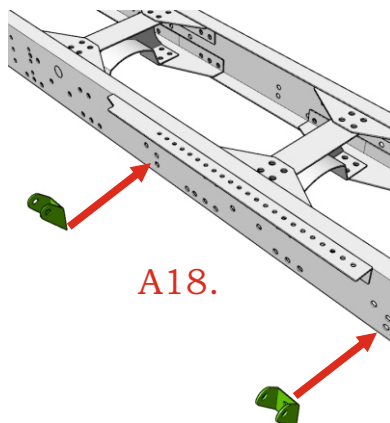
29.



30. PE-part #27



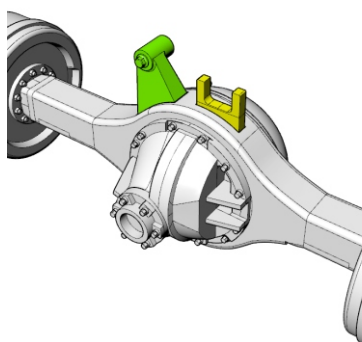
31.



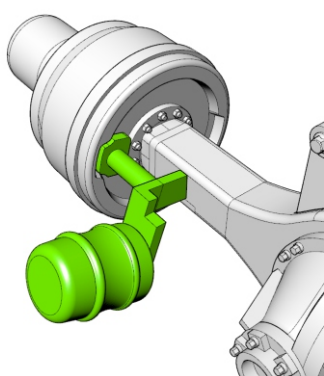
32.

Repeat steps #28-31 for right side.

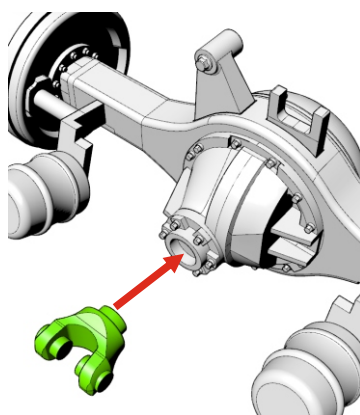
33. x2



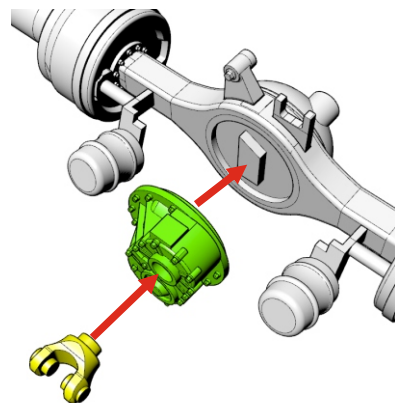
34. x4



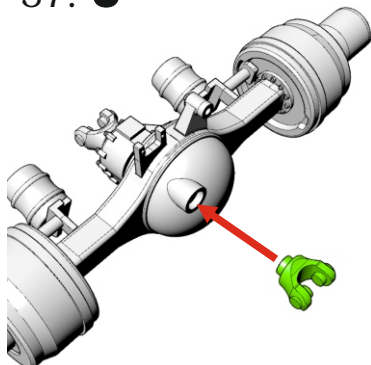
35.



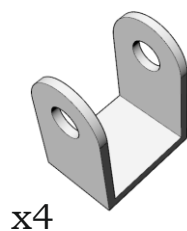
36.



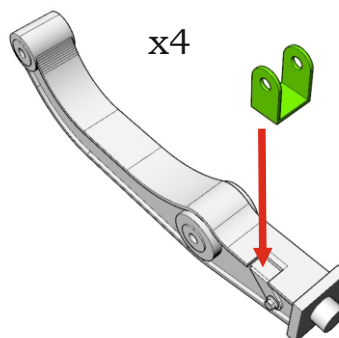
37.



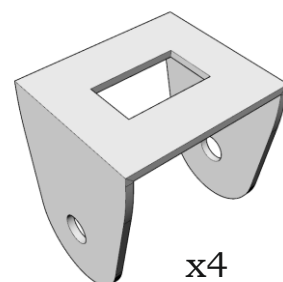
38. PE-part #30



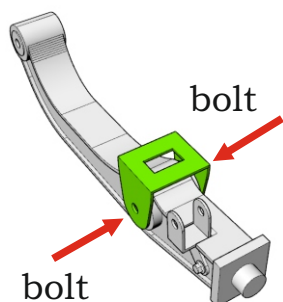
39.



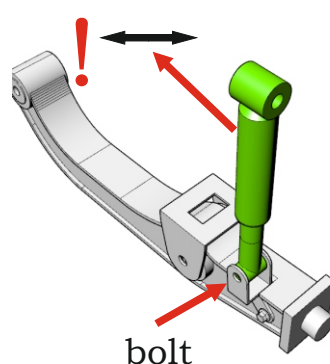
40. PE-part #29



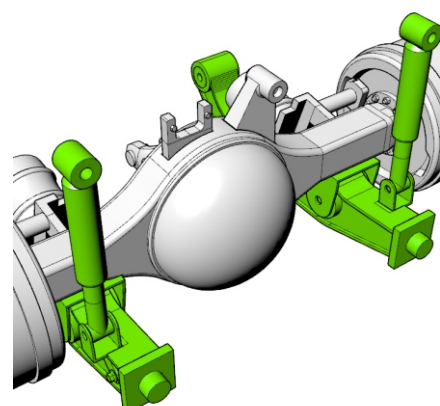
41. x4



42. x4



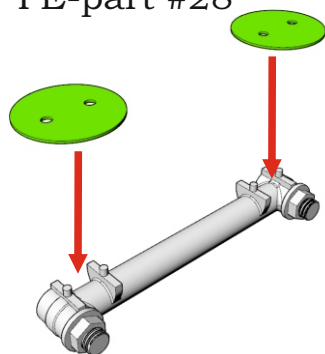
43. x2



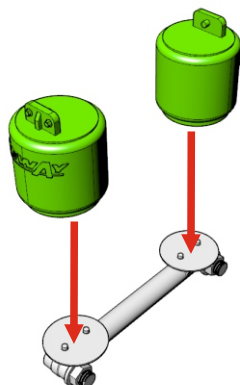
Chassis for Aussie Titan truck (day cab)

44.  x2

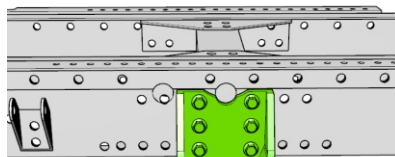
PE-part #28



45.  x2

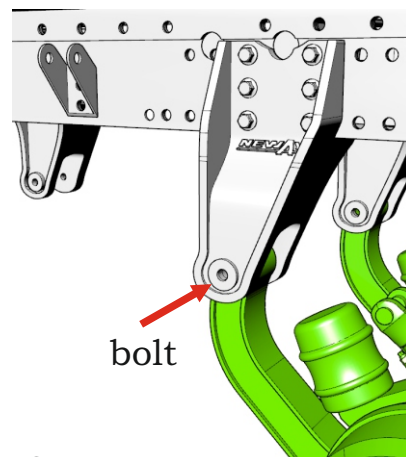


46.  x4



to front

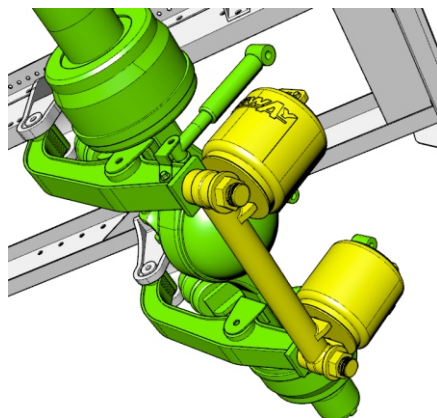
47.  x8



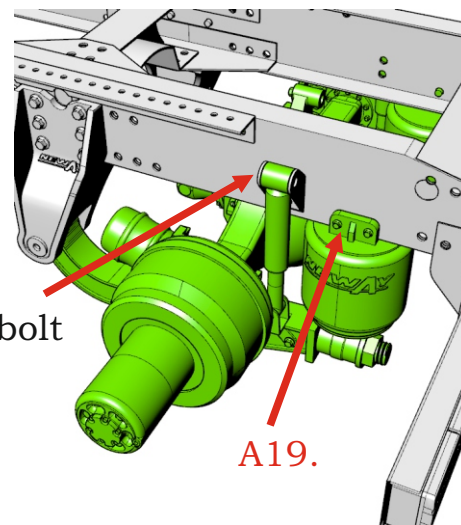
A14.

bolt

48.  x2



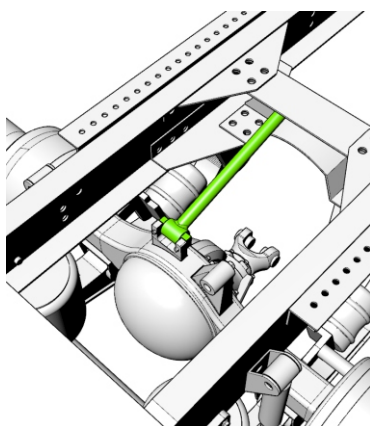
49.  x2



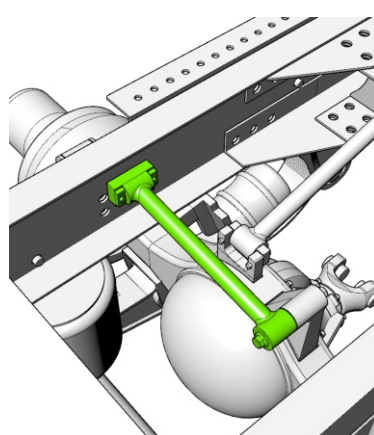
bolt

A19.

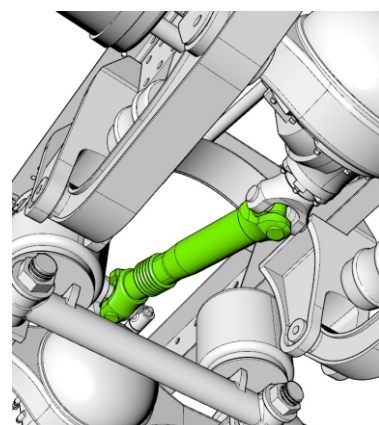
50.  x2



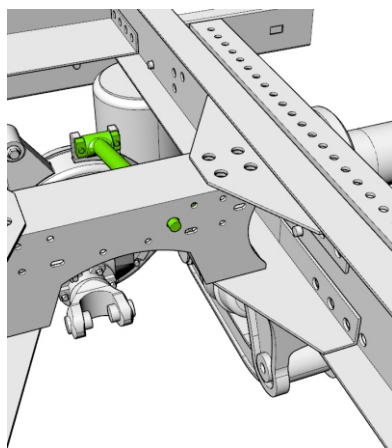
51.  x2




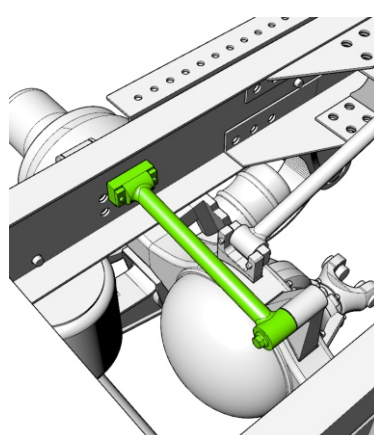
52. 



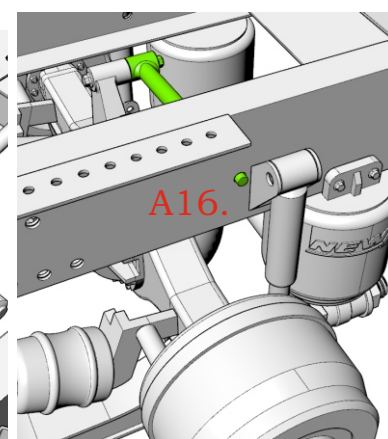
53.  x2



54. 



55.  x2

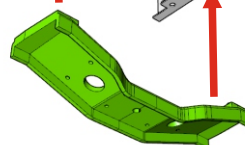


A16.

A2.



A3.



A5.



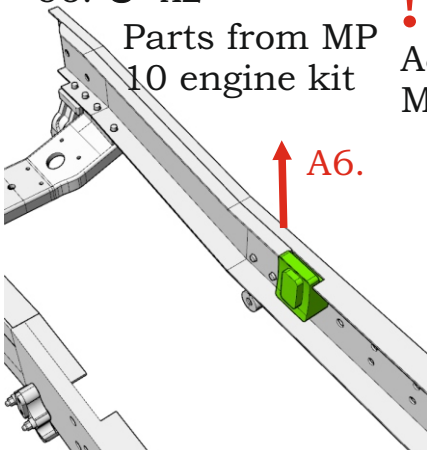
Chassis for Aussie Titan truck (day cab)

56. ● x2

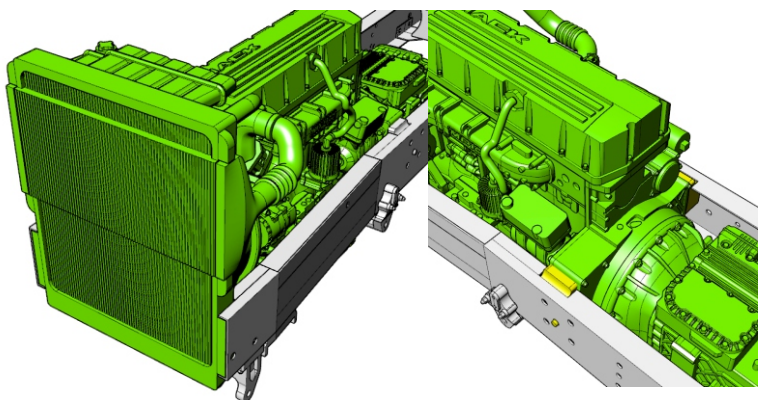
Parts from MP
10 engine kit



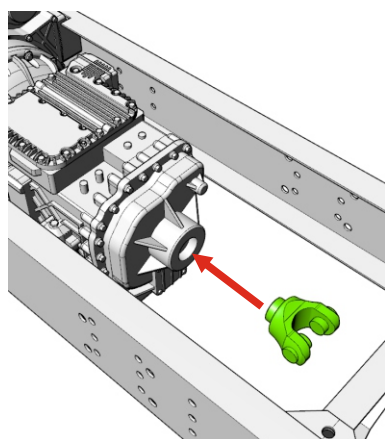
A&N Model Trucks
MP10 engine shown



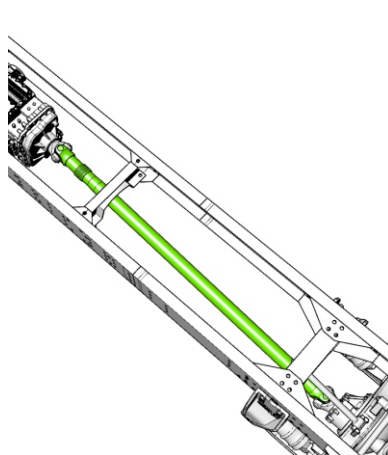
57. ●



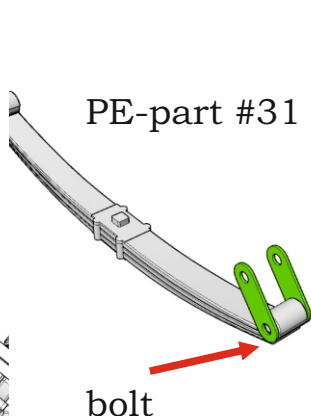
58. ●



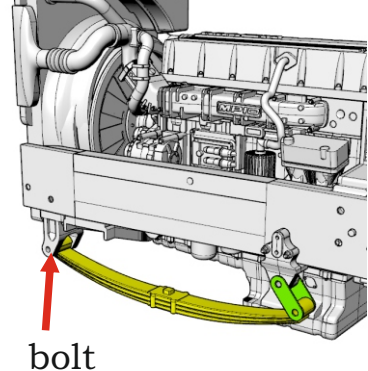
59. ●



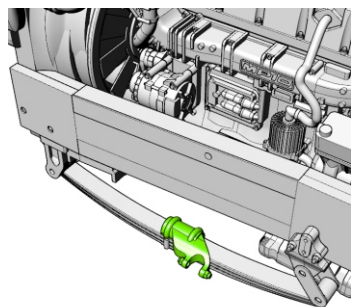
60. ● x2



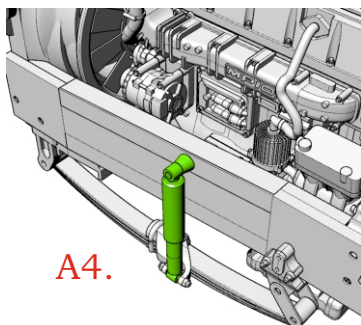
61. ● x2



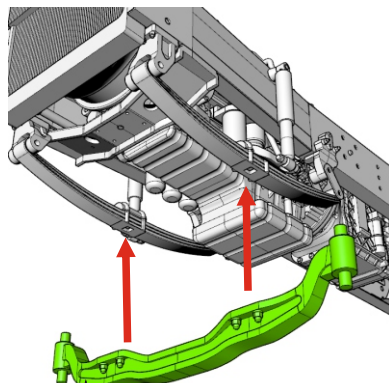
62. ● x2



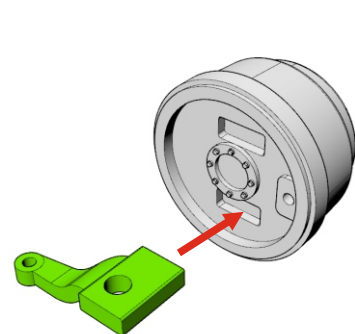
63. ● x2



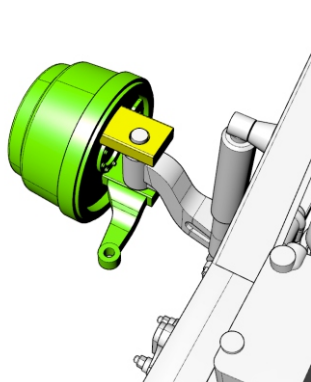
64. ●



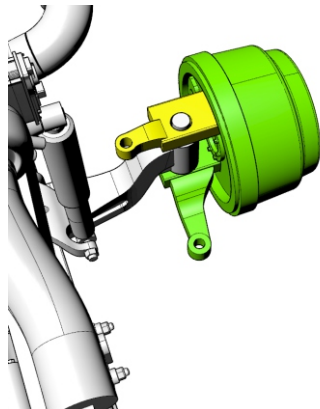
65. ● x2



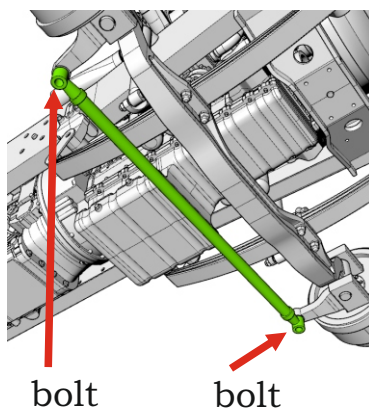
66. ●



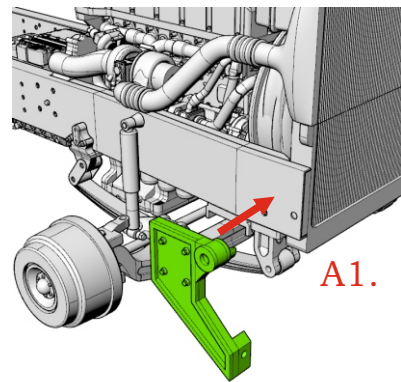
67. ●



68. ●




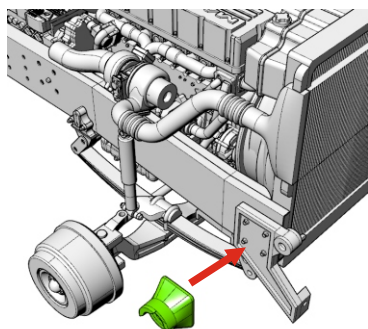
69. ● x2




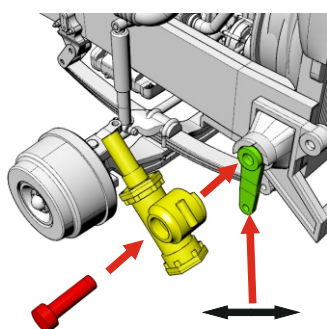
Parts from Aussie
Titan cab kit


Chassis for Aussie Titan truck (day cab)

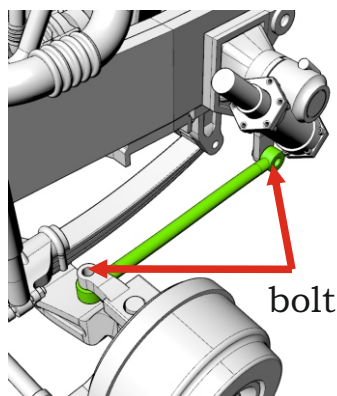
70. 



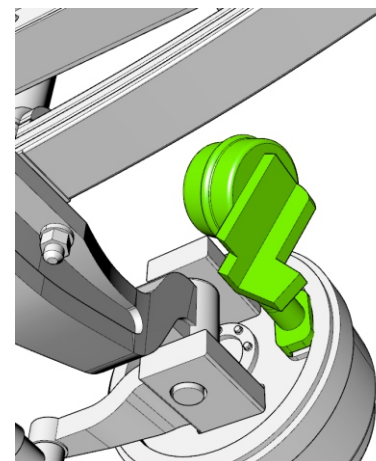
71. 



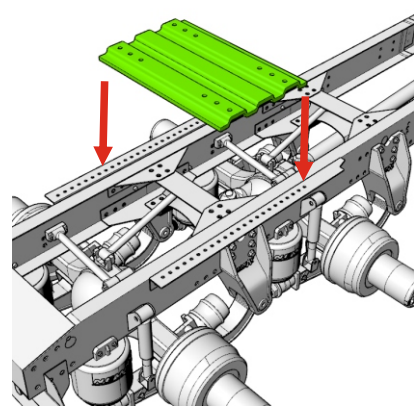
72. 



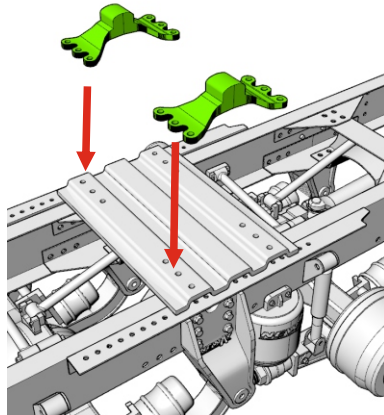
73.  x2



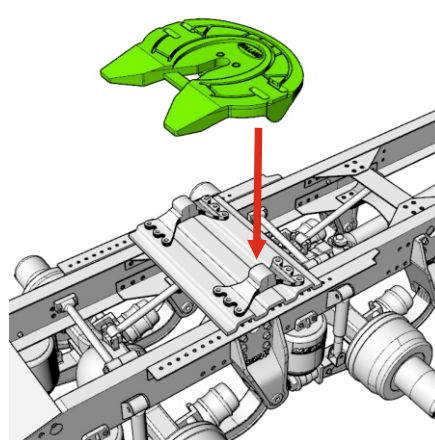
74. 



75. 



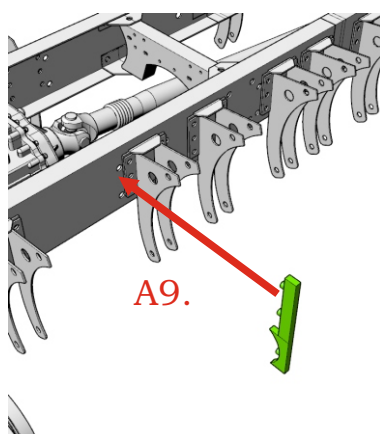
76. 



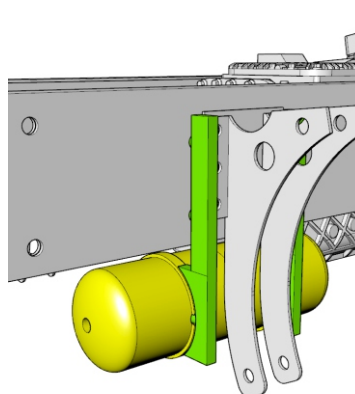
77.

Complete steps
1-14 of Aussie
Titan cab kit's
instruction.

78.  x6



79.  x3



Apertures #15
are for mudguards
installing.