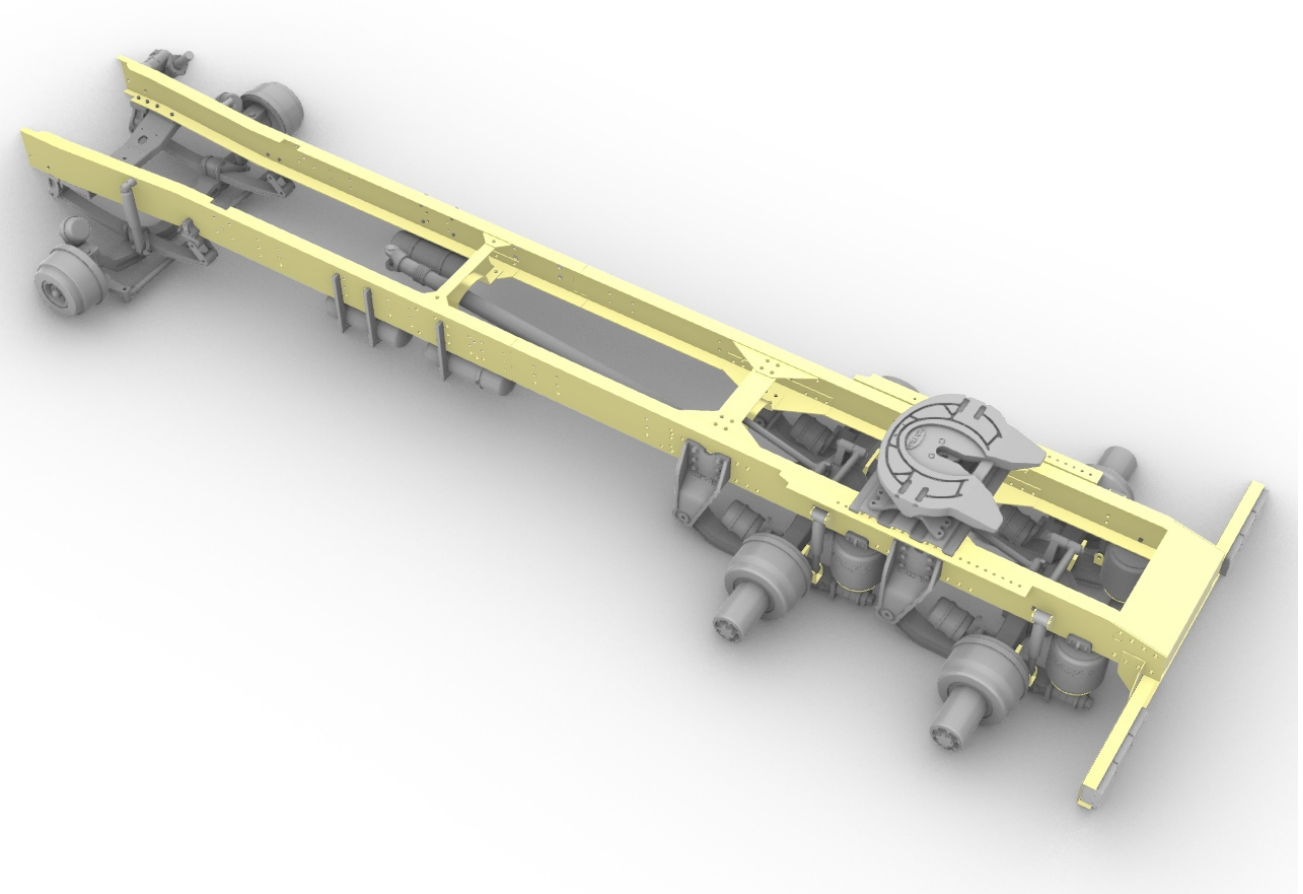


A&N Model Trucks



Chassis for Aussie
Titan truck
(sleeper cab)

Made in Latvia

Chassis for Aussie Titan truck (sleeper cab)

Warning!

Read carefully this instruction and please follow it during assembling, otherwise you could face problems with assembling the model.

Photo-etched parts have sharp edges, please be careful.

This model kit contains very small parts and is not suitable for children.

This model kit is for advanced modellers only!

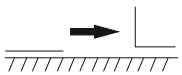
Symbols:



- glue parts;



- do not glue parts;



- bend parts;



- attention;



- moving parts;



- your choice;

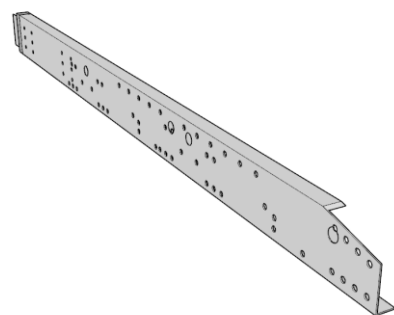


- cut;

A1 - apertures' number;

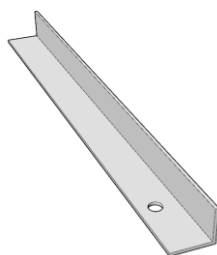
Chassis for Aussie Titan truck (sleeper cab)

1.



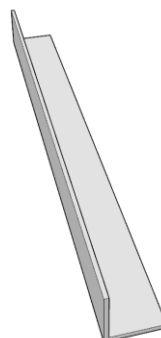
PE-part #1

2.



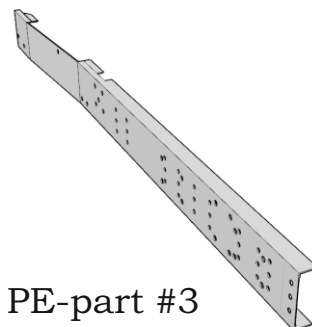
PE-part #18

3.



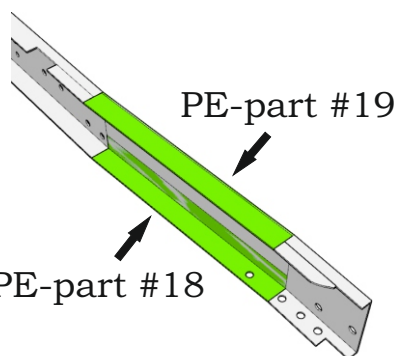
PE-part #19

4.

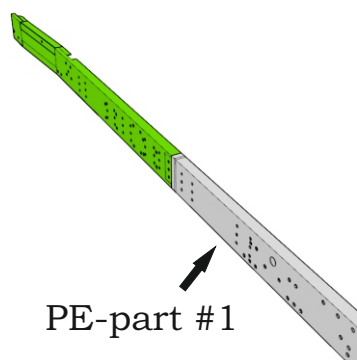


PE-part #3

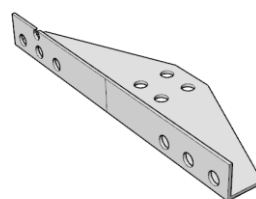
5.



6.

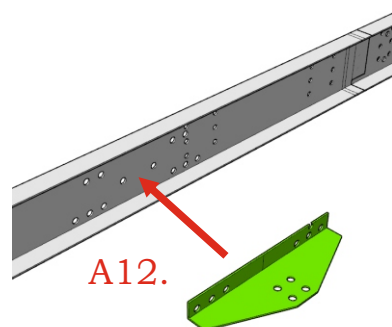


7.

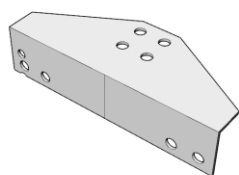


PE-part #8

8.

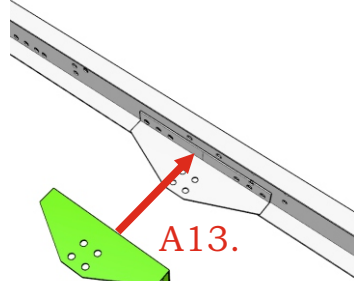


9.

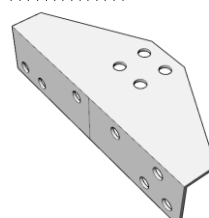


PE-part #12

10.

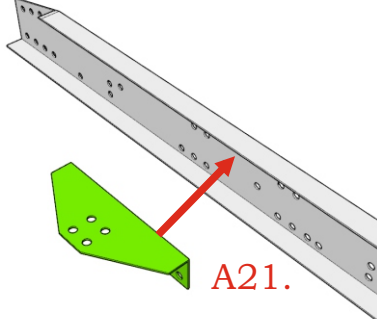


11.

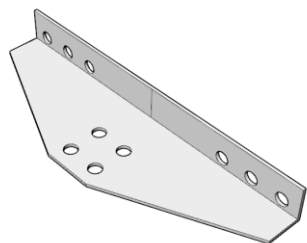


PE-part #9

12.

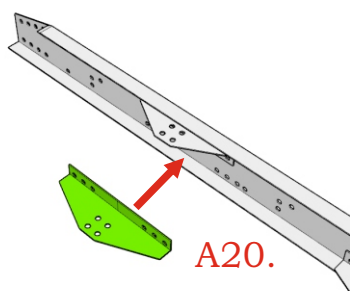


13.

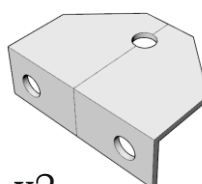


PE-part #5

14.



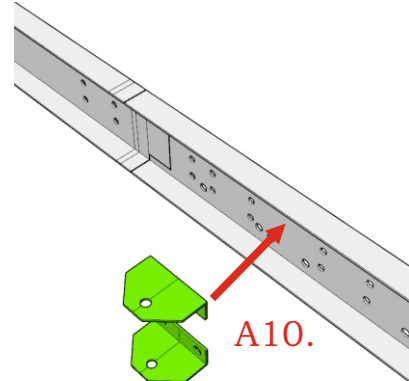
15.



PE-part #13

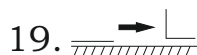
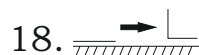
x2

16.

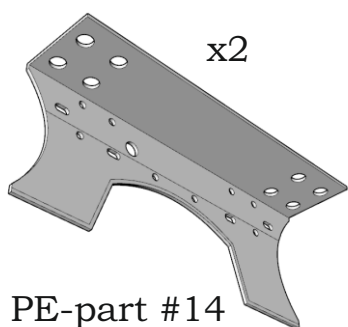


Chassis for Aussie Titan truck (sleeper cab)

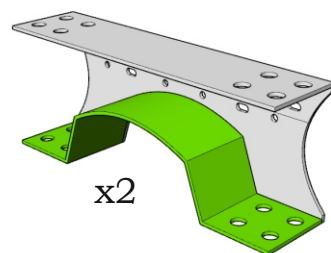
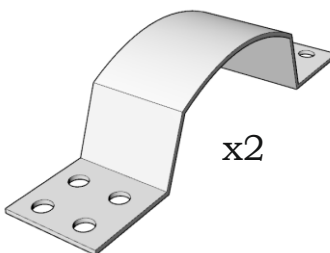
17.




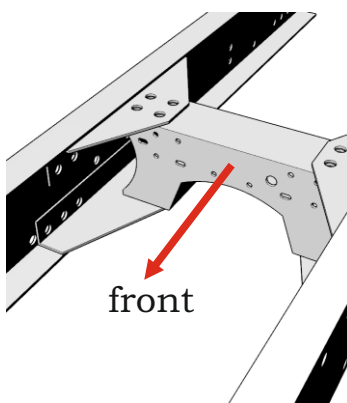
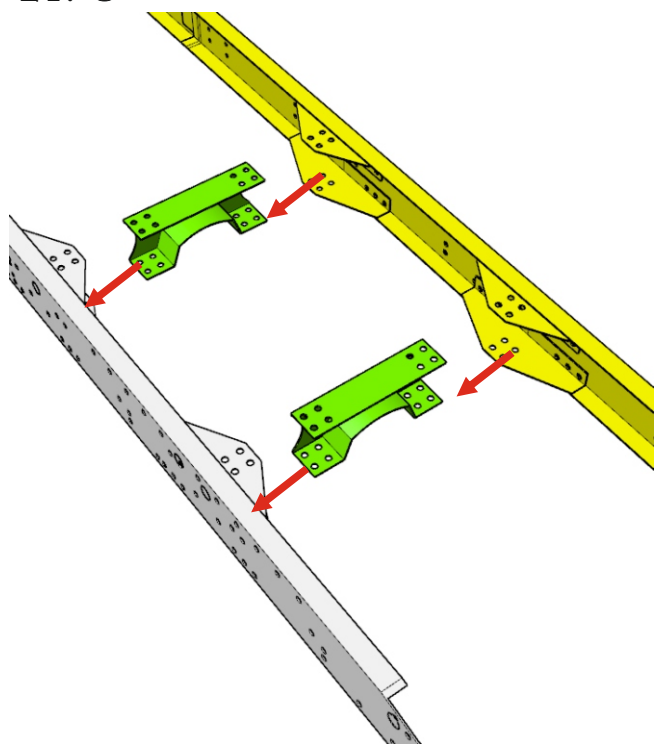
Repeat steps
1-16 for
right side.

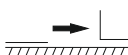


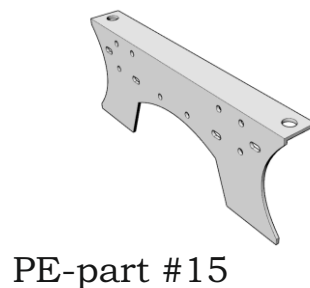
PE-part #16




21. 



22. 

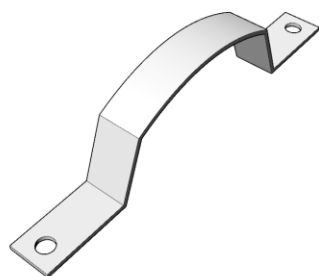


23. 

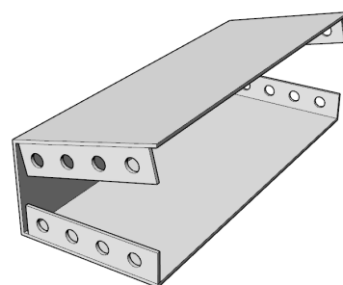
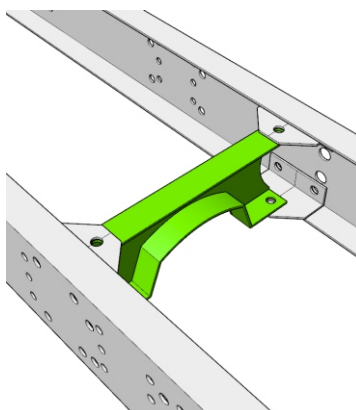
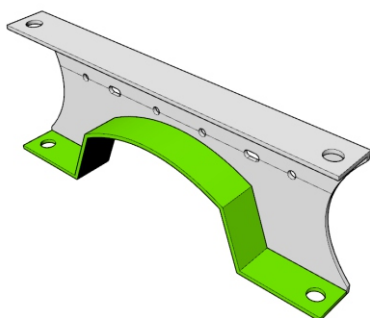
24. 

25. 

26. 



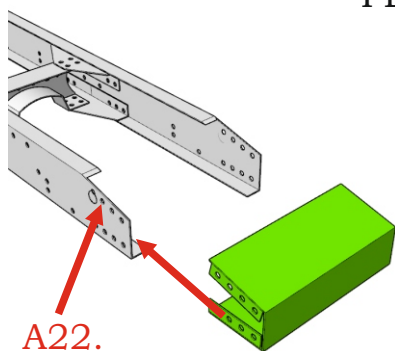
PE-part #17



PE-part #22

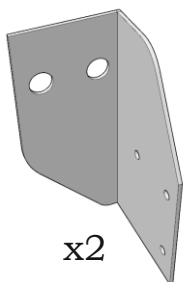
Chassis for Aussie Titan truck (sleeper cab)

27.

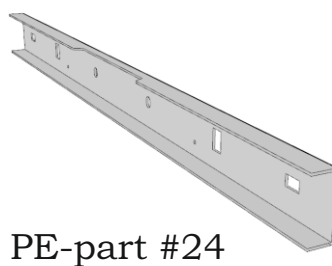


28.

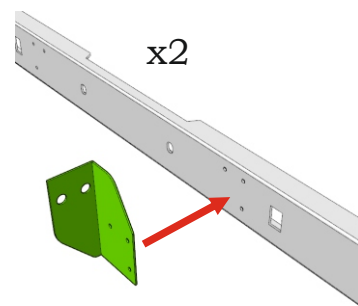
PE-part #23



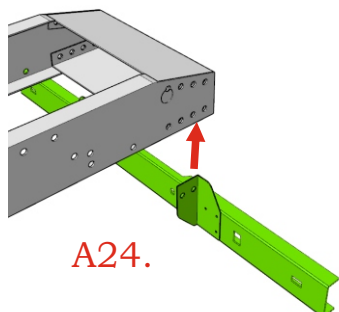
29.



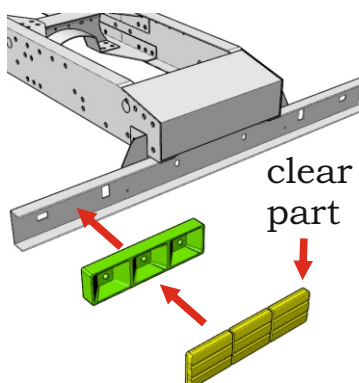
30.



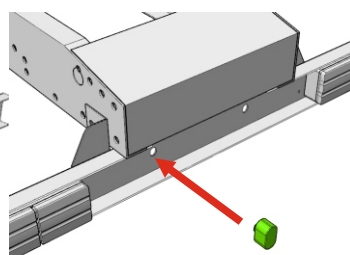
31.



32. x2

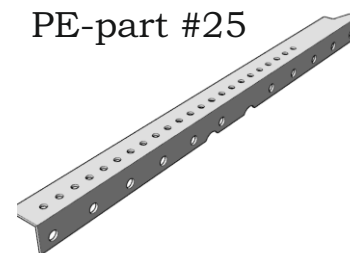


33. x2

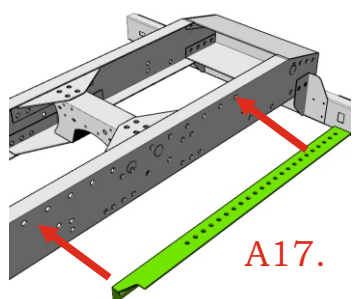


34.

PE-part #25

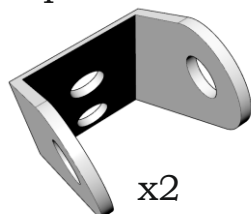


35.

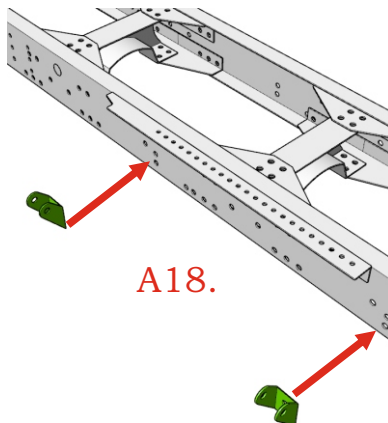


36.

PE-part #27



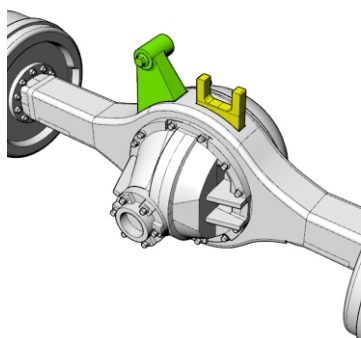
37.



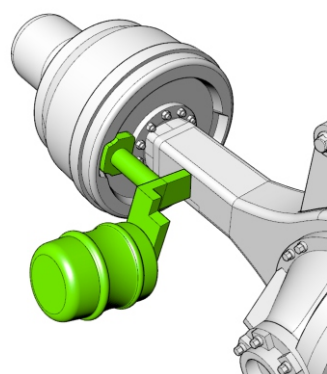
38.

Repeat steps #34-37 for right side.

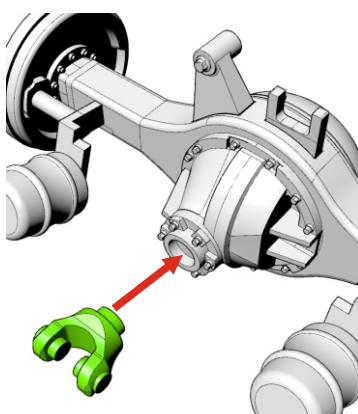
39. x2



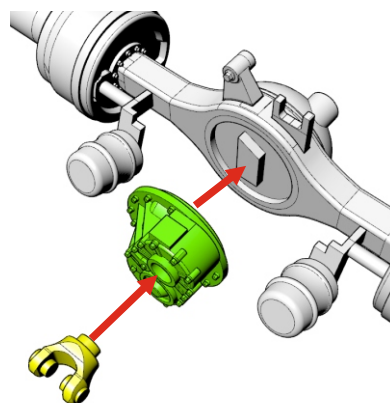
40. x4




41.

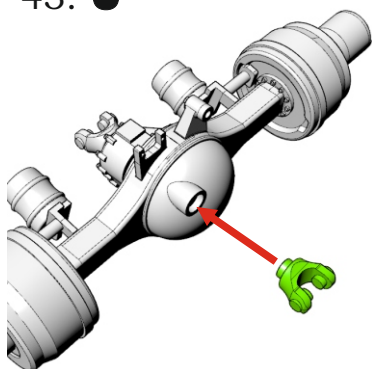


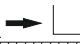
42.

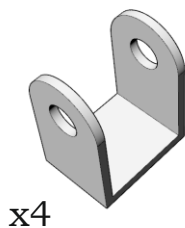



Chassis for Aussie Titan truck (sleeper cab)

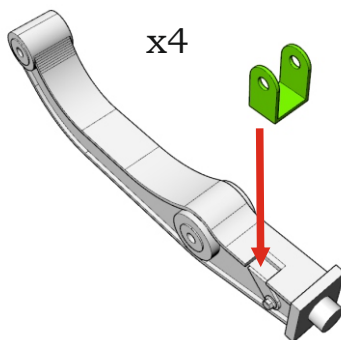
43. 

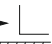


44.  PE-part #30

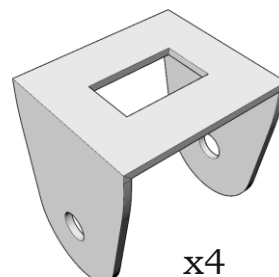


45. 

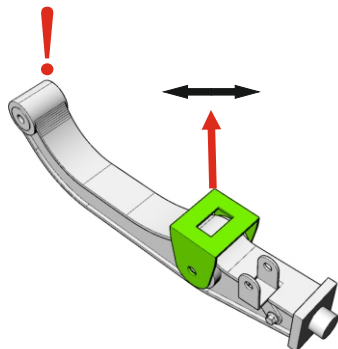
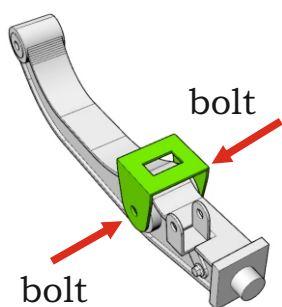


46. 

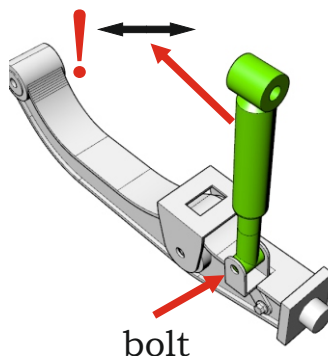
PE-part #29



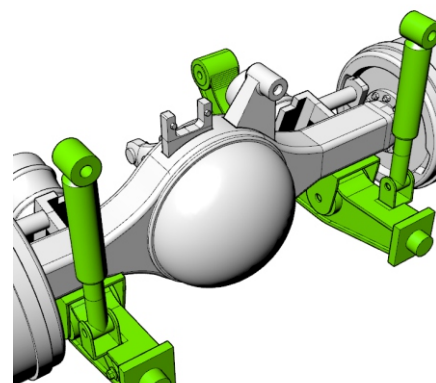
47.  x4



48.  x4

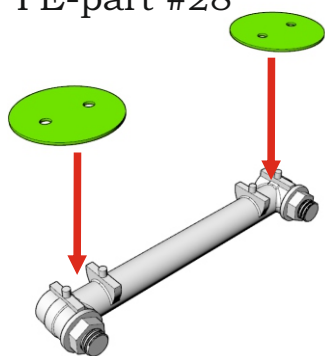


49.  x2

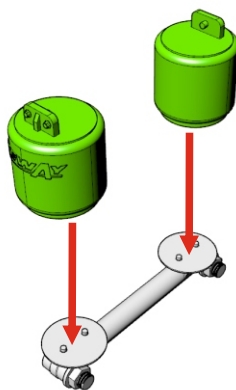


50.  x2

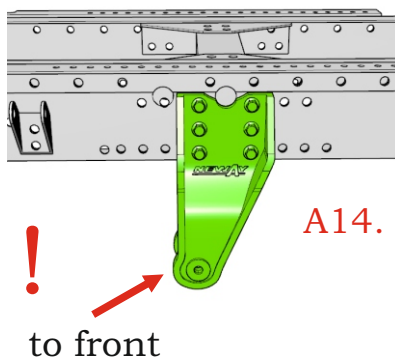
PE-part #28



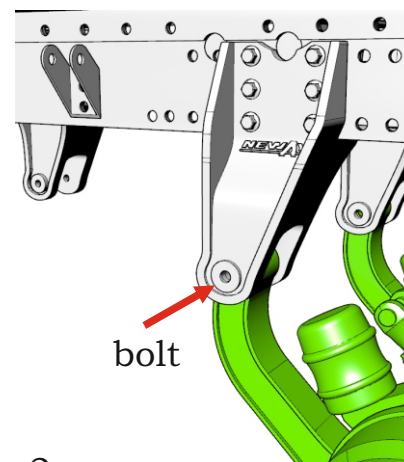
51.  x2



52.  x4

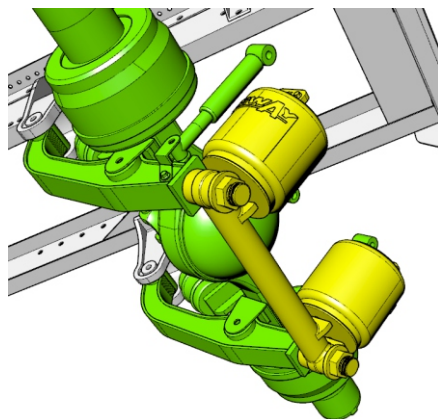


53.  x8

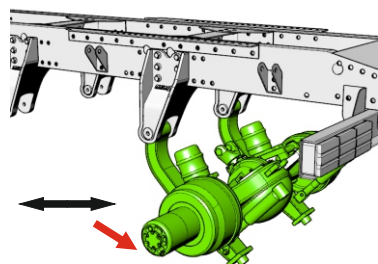
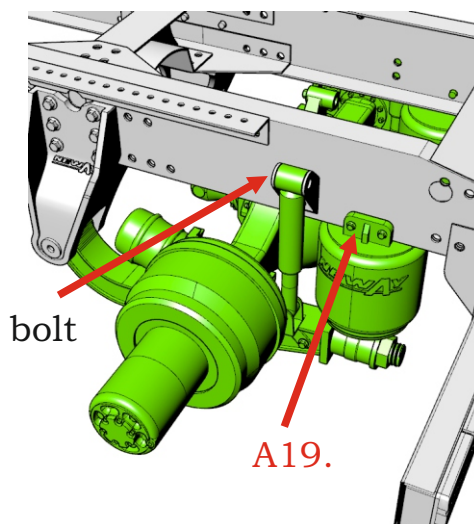


!

54.  x2

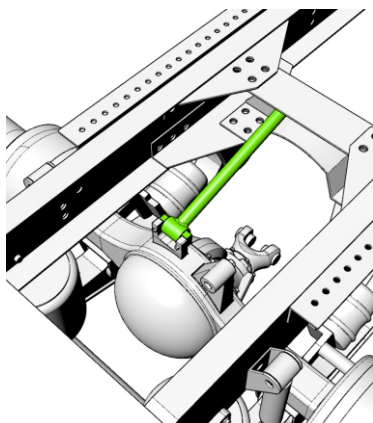


55.  x2

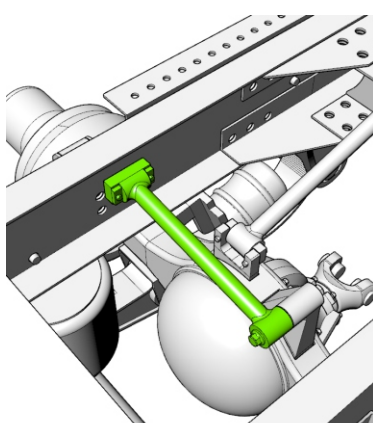


Chassis for Aussie Titan truck (sleeper cab)

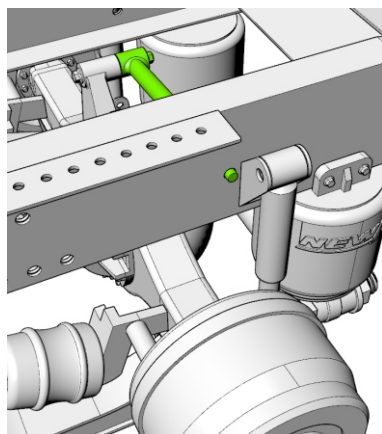
56.  x2




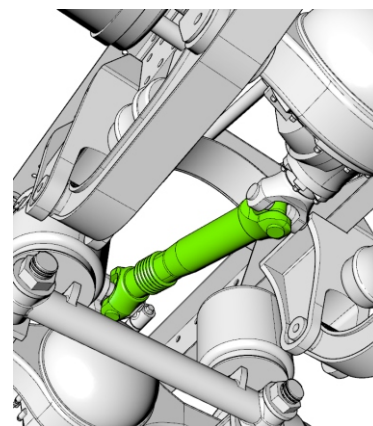
57.  x2



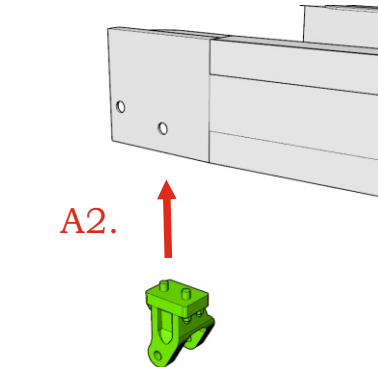
A16.




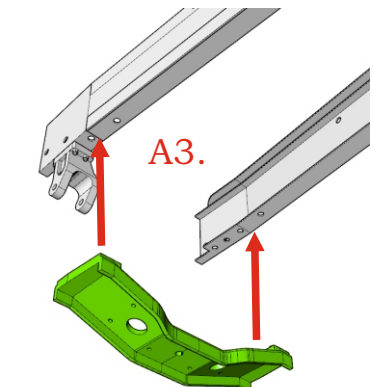
58. 



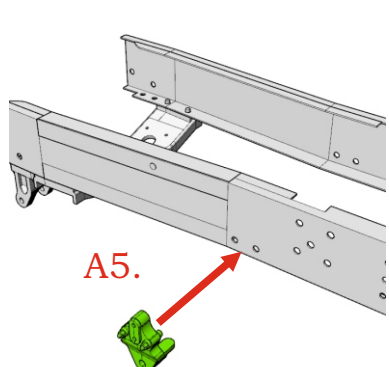
59.  x2



60. 

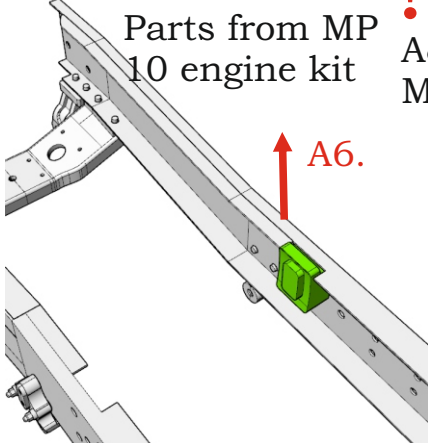


61.  x2




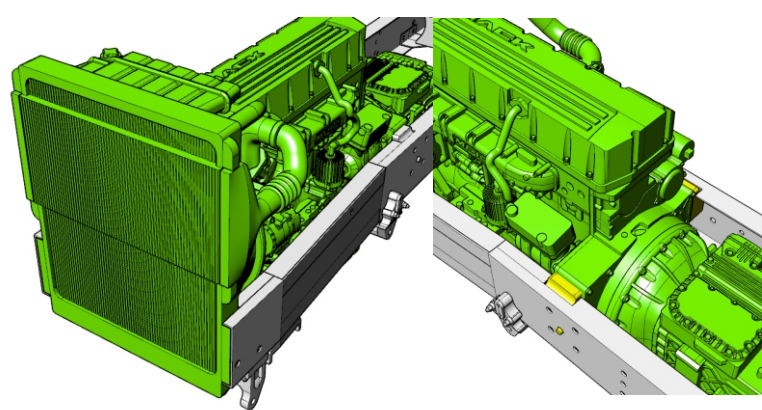
62.  x2

Parts from MP
10 engine kit

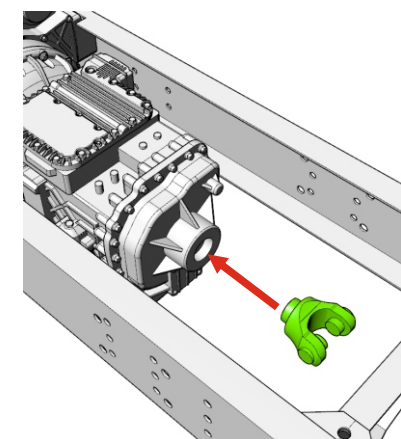


! A&N Model Trucks
MP10 engine shown

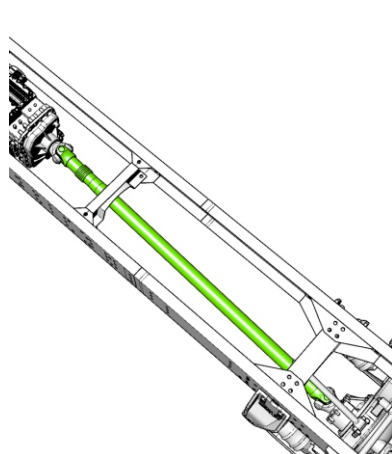
63. 



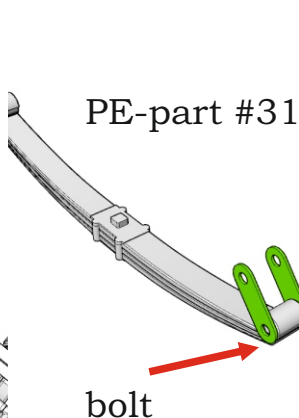
64. 



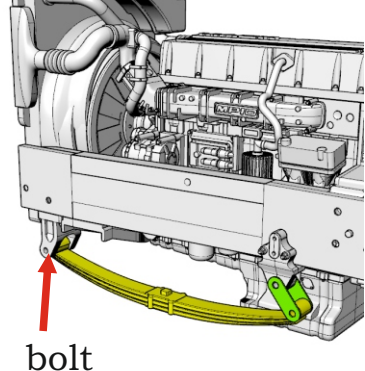
65. 



66.  x2

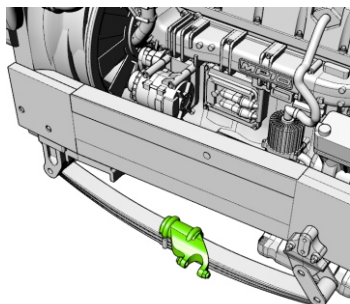


67.  x2

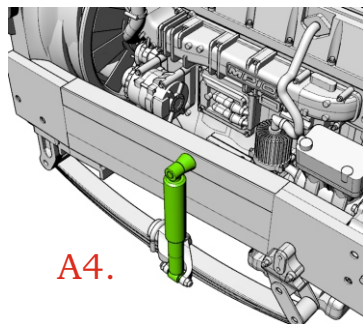



Chassis for Aussie Titan truck (sleeper cab)

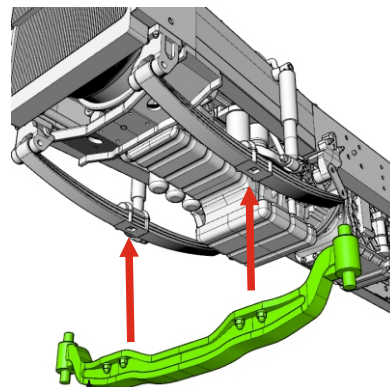
68.  x2



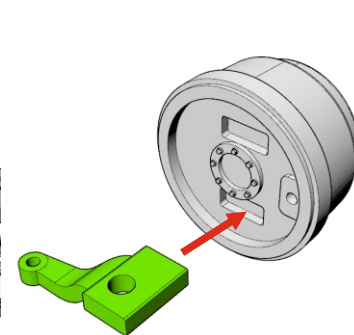
69.  x2



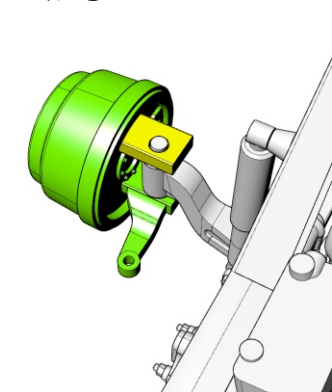
70. 




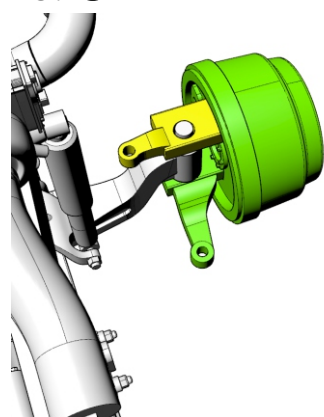
71.  x2



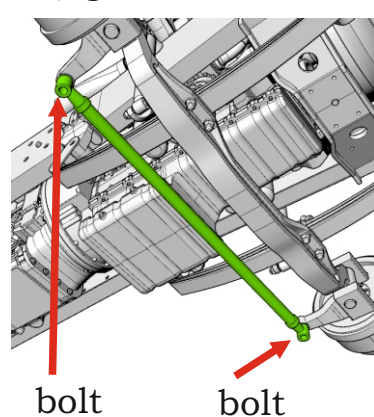
72. 



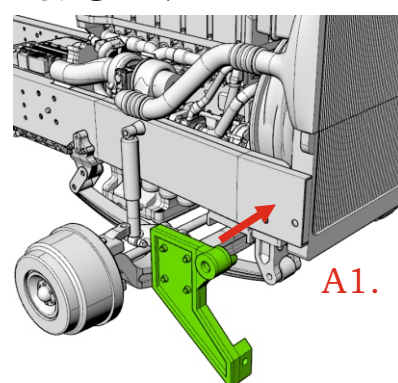
73. 




74. 

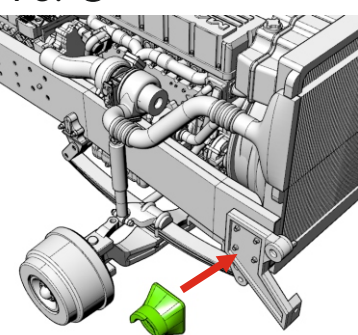



75.  x2

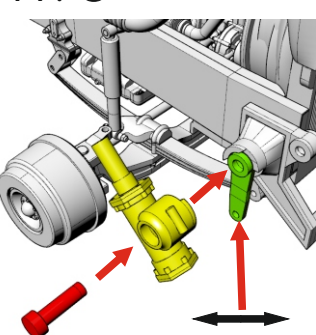



Parts from Aussie
Titan cab kit

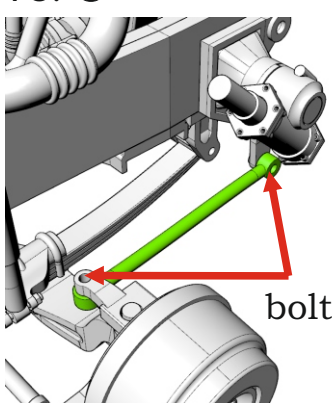
76. 



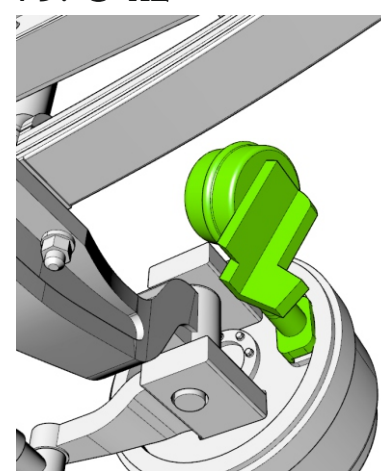
77. 



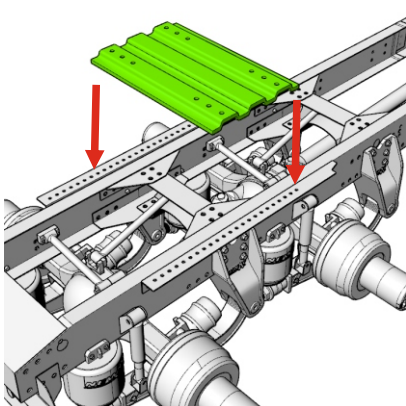
78. 




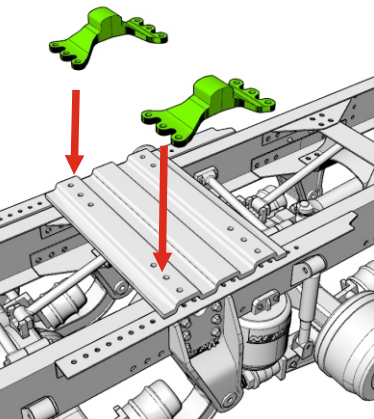
79.  x2




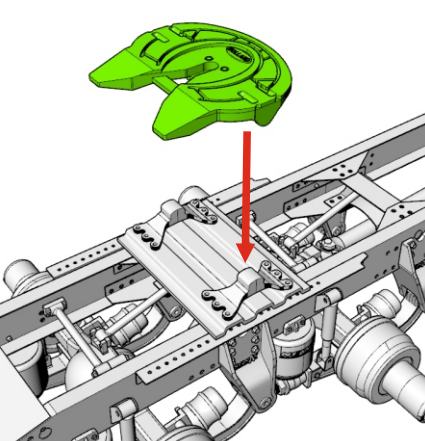
80. 



81. 



82. 

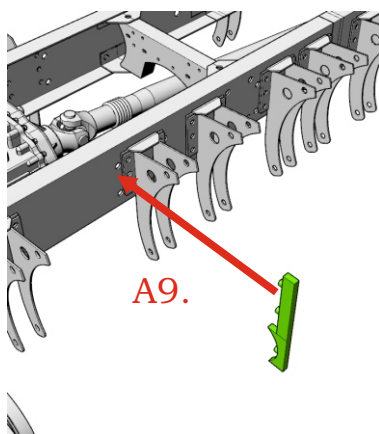


Chassis for Aussie Titan truck (sleeper cab)

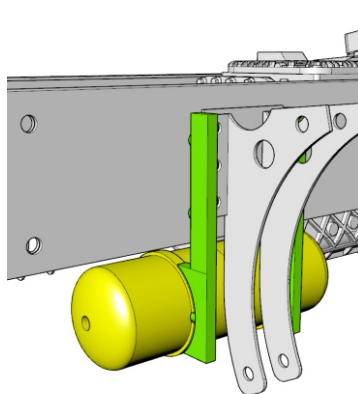
83.

Complete steps 1-14 of Aussie Titan cab kit's instruction.

84.  x6



85.  x3



Apertures #15 are for mudguards installing.