

A&N Model Trucks

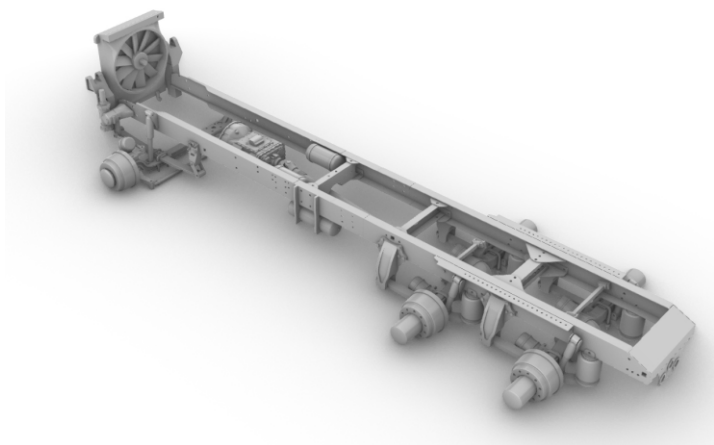


Photo-etched chassis for
US Argosy truck

Scale 1/24

Warning!

Please follow this instruction while assembling, otherwise you could face problems with assembling the model.

Photo-etched parts have sharp edges, please be careful.

This model kit contains small parts and is not suitable for children.

This model is for advanced modellers only.

Symbols:

● - glue parts;

⊗ - do not glue parts;

→└┐ - bend parts;

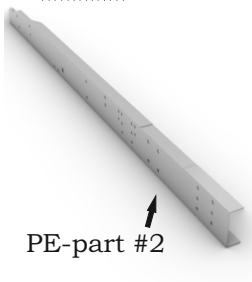
! - attention;

↔ - moving parts;

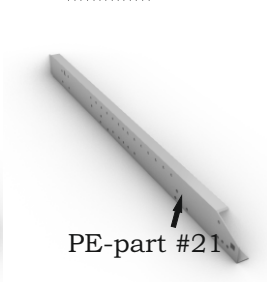
? - your choice;

h# - frame rails holes' numbers;

1. →└┐



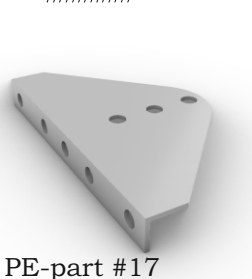
2. →└┐



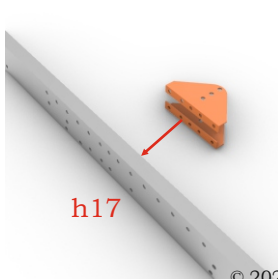
3. ●



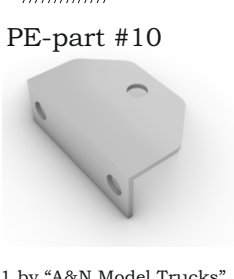
4. →└┐ x2



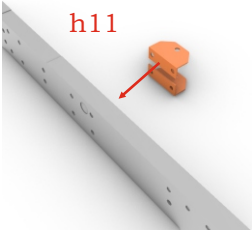
5. ●



6. →└┐ x2

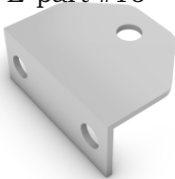


7.  x2

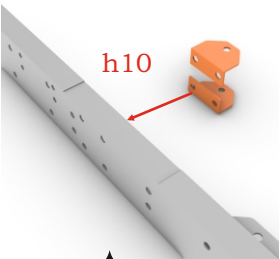


8.  x2

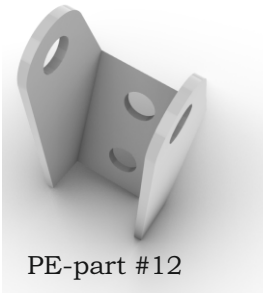
PE-part #16



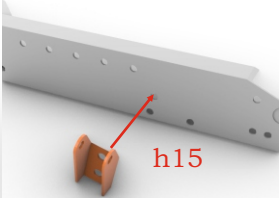
9.  x2



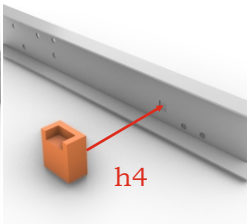
10.  x2

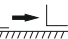


11.  x2



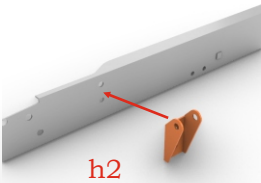
12. 




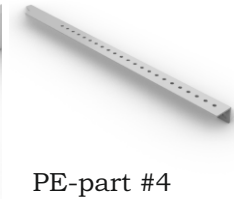
13. 



14. 

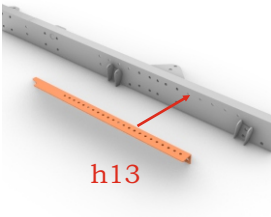


15. 



PE-part #4

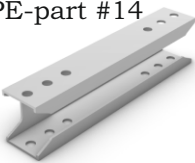
16. 



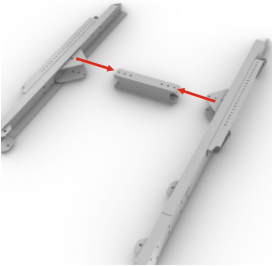
17.
Repeat steps 1-16
for right side.

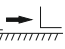
18. 

PE-part #14

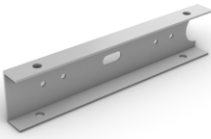


19. 

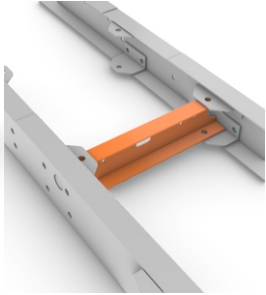


20. 

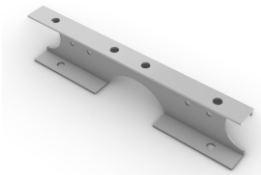
PE-part #11



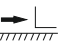
21. 



22. 



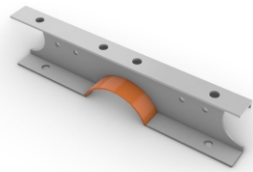
PE-part #15

23. 

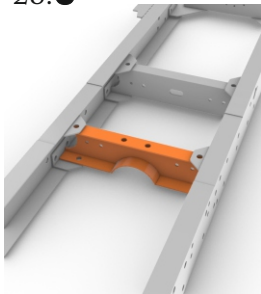


PE-part #3

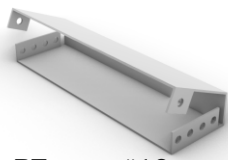
24. 



25. 



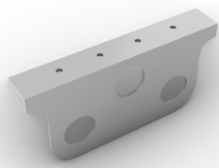
26. 



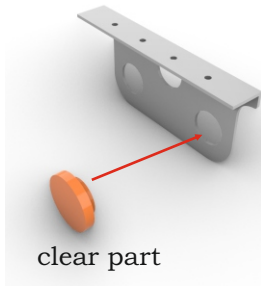
PE-part #13

27. 

PE-part #18

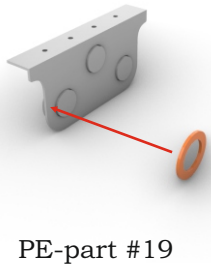


28.  x3



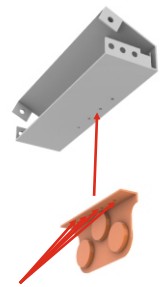
clear part

29.  x3

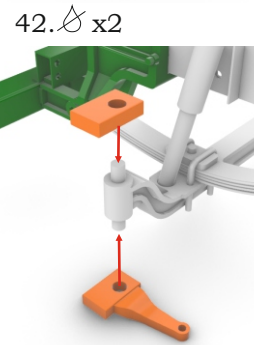
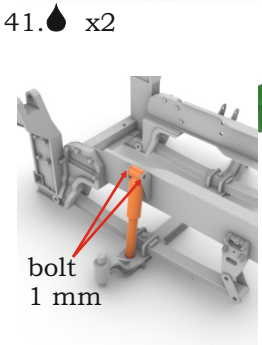
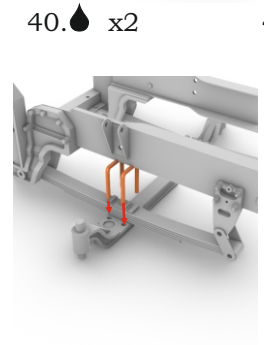
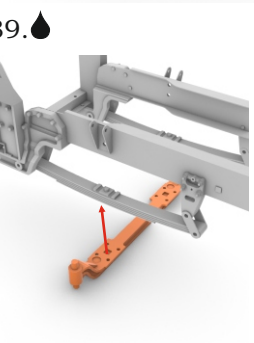
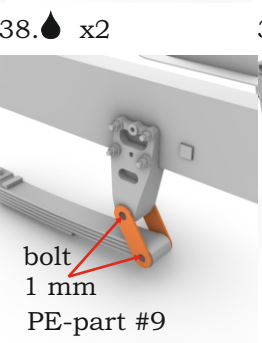
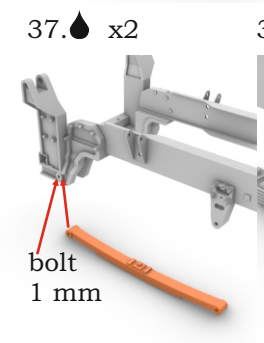
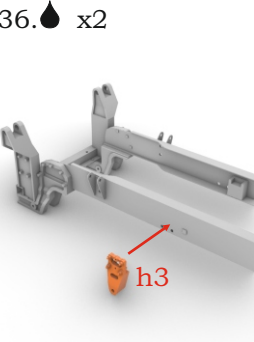
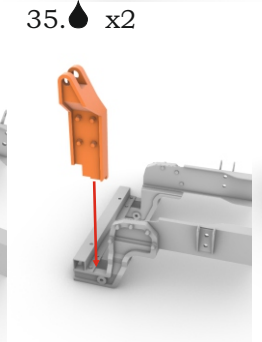
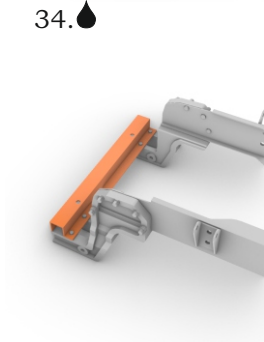
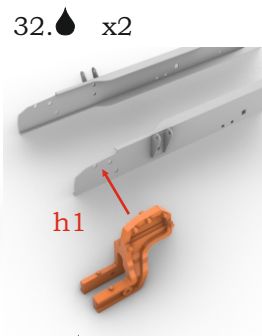
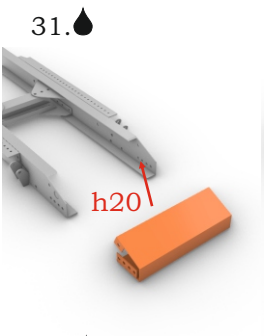


PE-part #19

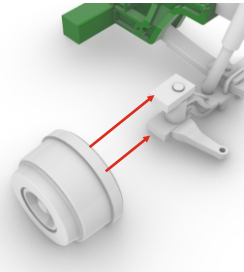
30. 



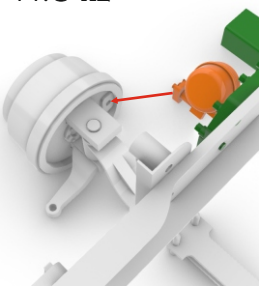
bolts 0.5 mm



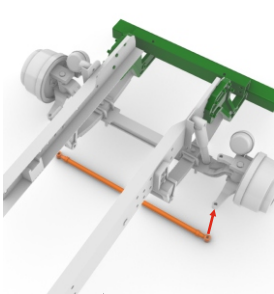
43.  x2



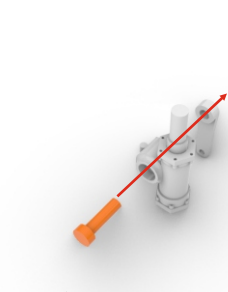
44.  x2



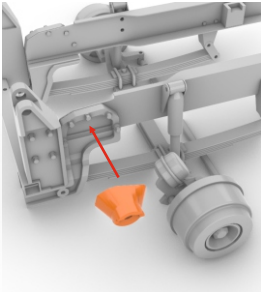
45. 



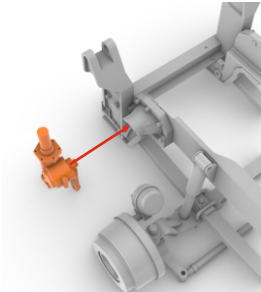
46. 



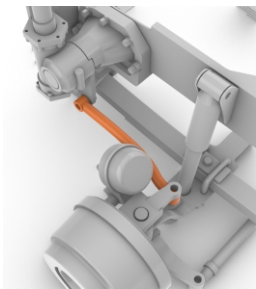
47. 



48. 

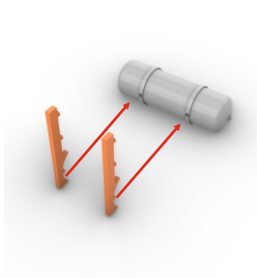


49. 

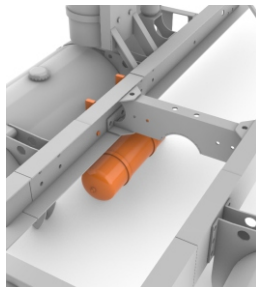


50.
Jump on step #51
of instruction for
A&N Aussie Argosy
cab kit.

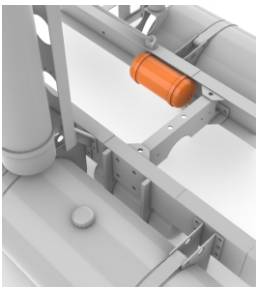
51. 



52. 



53.  x2



54.  x2

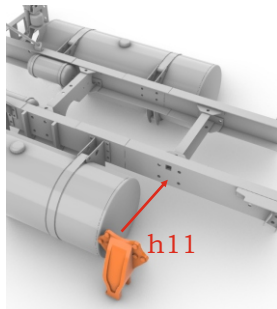
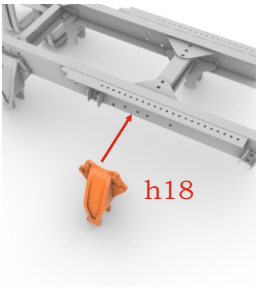
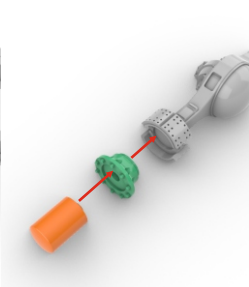


Photo-etched chassis for US Argosy truck. Scale 1/24

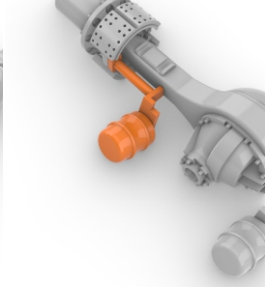
55.  x2



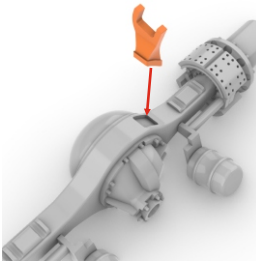
56.  x4



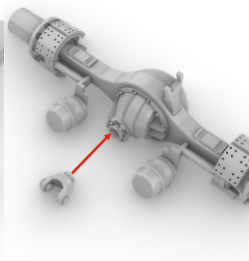
57.  x2



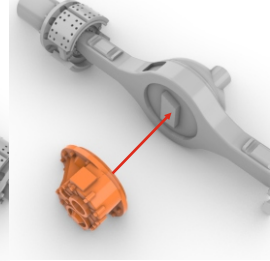
58. 



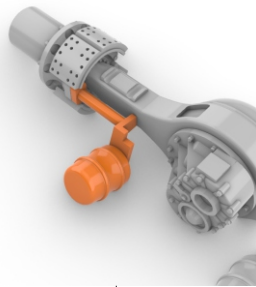
59. 



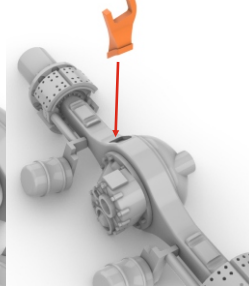
60. 



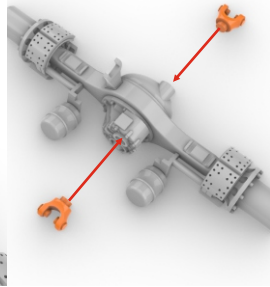
61.  x2



62. 



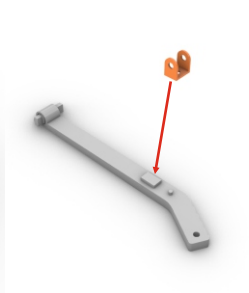
63. 



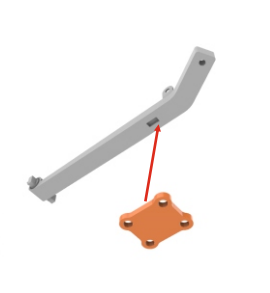
64.  x4



65.  x4

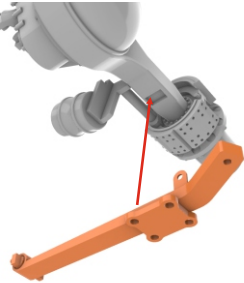


66.  x4

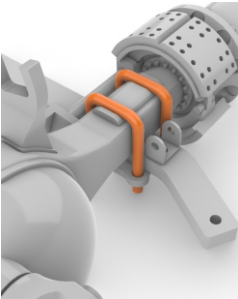


PE-part #7

67. x4



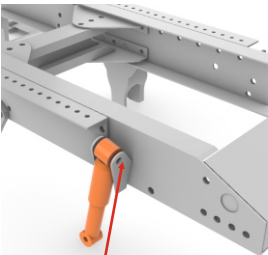
68. x4



69. x4

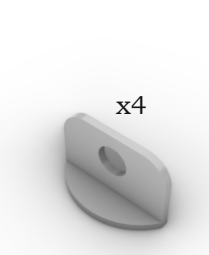


70. x4



bolt 1 mm

71.

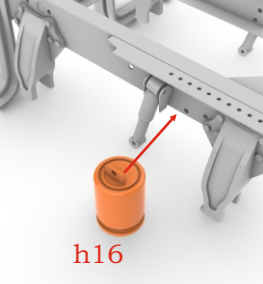


PE-part #6

72. x4

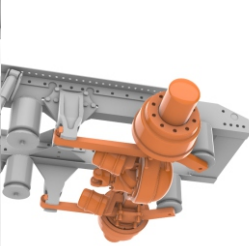


73. x4

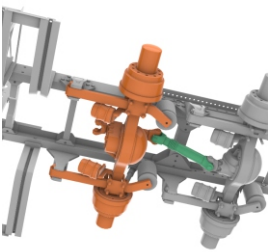


h16

74.



75.

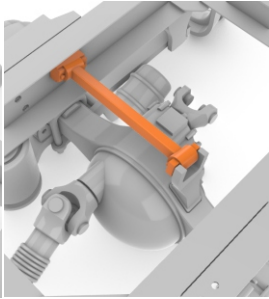


76.

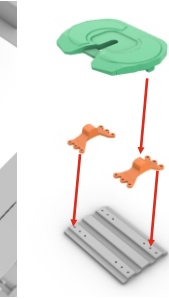


h19

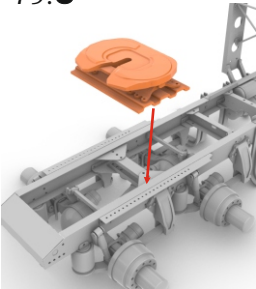
77. h14



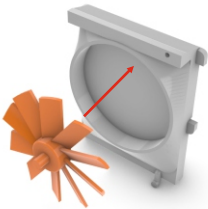
78.



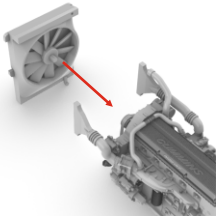
79. 



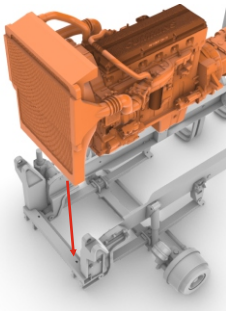
80. 



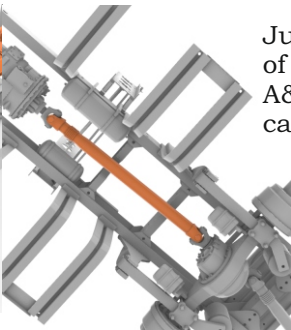
81. 



82. 



83. 



84.

Jump on step #81
of instruction for
A&N Aussie Argosy
cab kit.