

Air GL 400 rear suspension

Resin kit, 1/24

© 2019 by A&N Model Trucks

Made in Latvia.

Air GL 400 rear suspension

Highly detailed replica of rear air spring suspension for Australian and American trucks. Kit features: separate brake drums; 2 versions of hubs; highly detailed brake shoes. Can be used with generic Italeri US chassis.

Warning!

This kit for advanced modellers only!

Contains many small parts, not suitable for children!

Please read this instruction carefully and follow it during assembling.

Full size instruction available at instruction section of the our site :

<http://an-modeltrucks.com/downloads>

Reference pictures available at the our site:

<https://an-modeltrucks.com/shop/air-gl-400-rear-suspension/>

Air GL 400 rear suspension

Symbols:

🔹 - glue parts;

🚫 - do not glue parts;

➡ - bend parts;

! - attention;

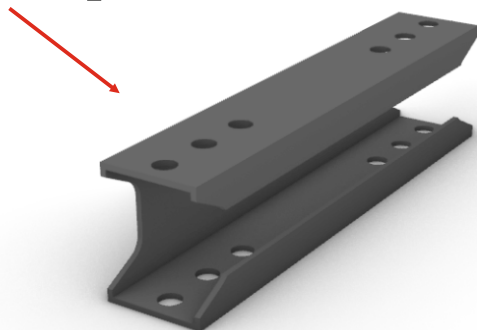
↔ - moving parts;

? - your choice;

✂ - cut;

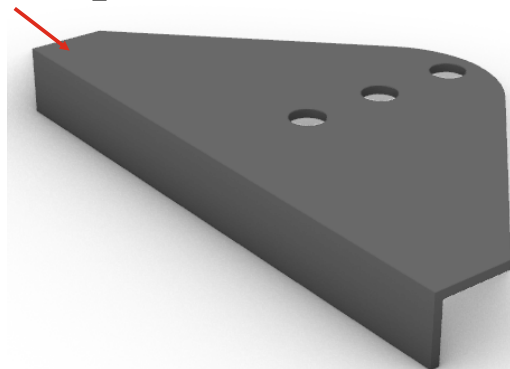
1. ➡

PE-part



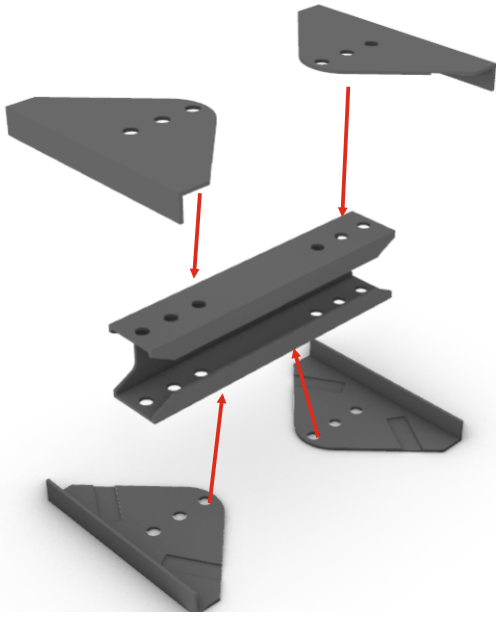
2. ➡ x4


PE-part

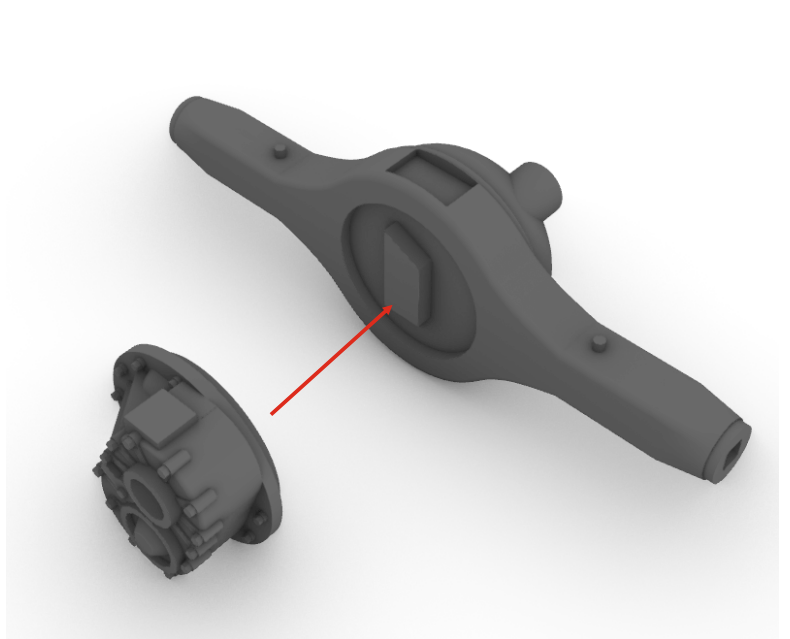


Air GL 400 rear suspension

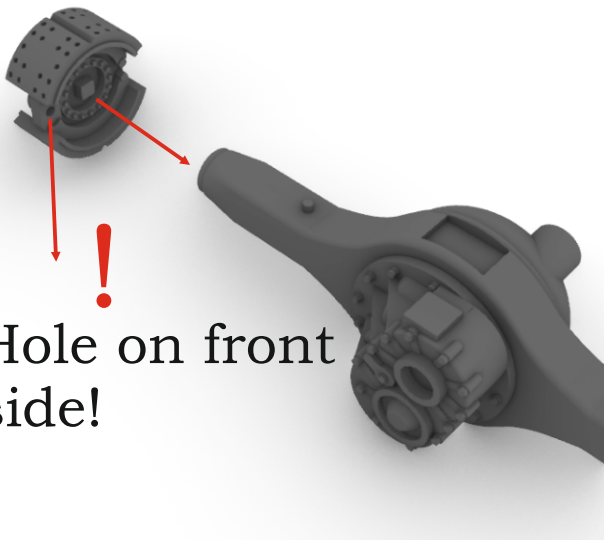
3. 



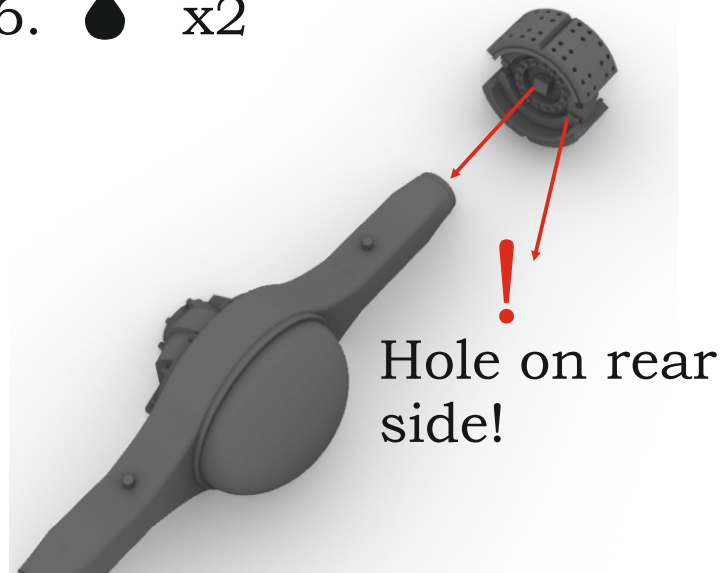
4. 



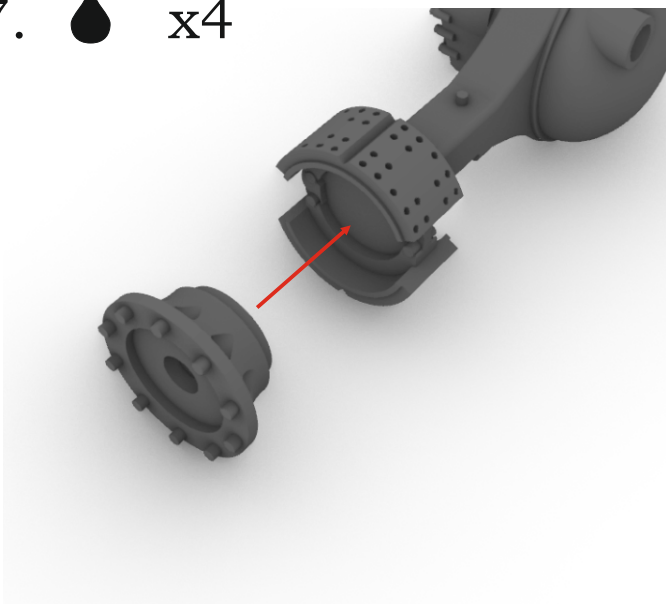
5.  x2



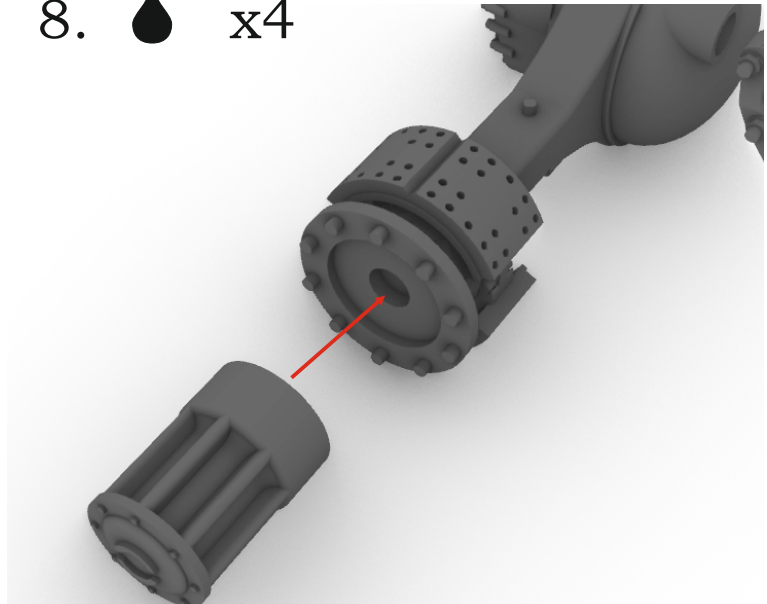
6.  x2



7.  x4

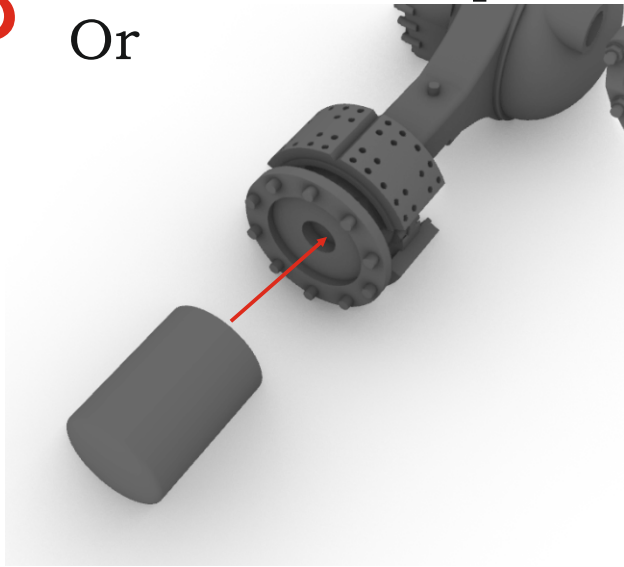


8.  x4

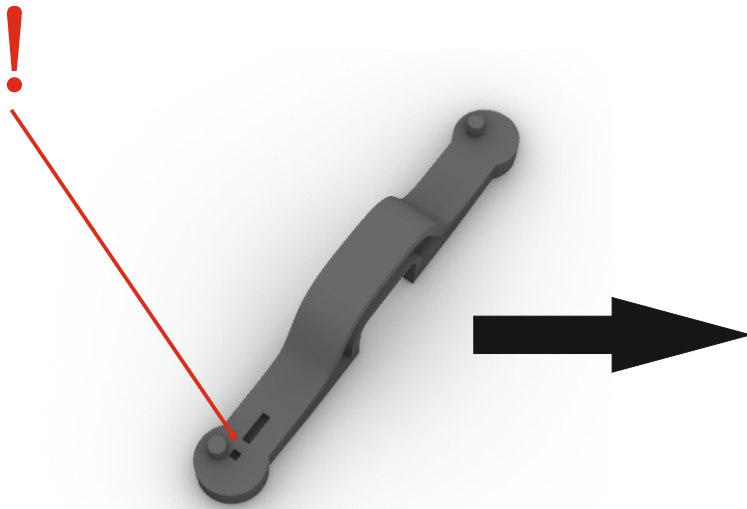
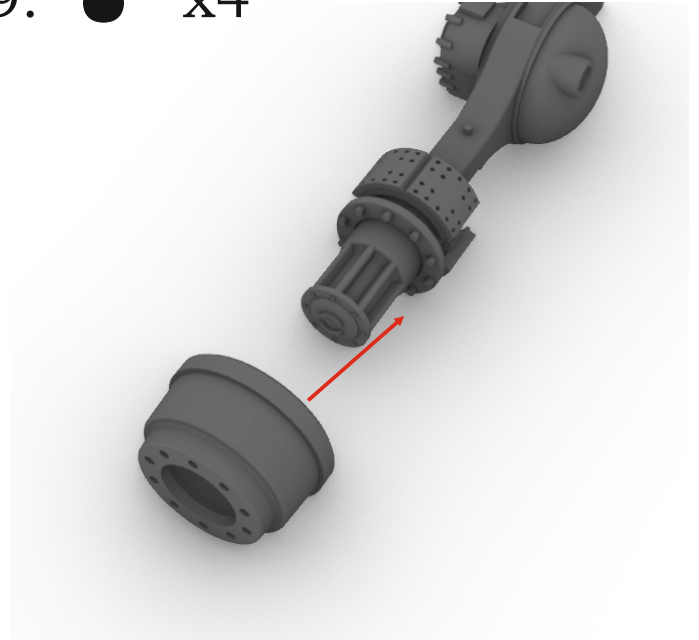


Air GL 400 rear suspension

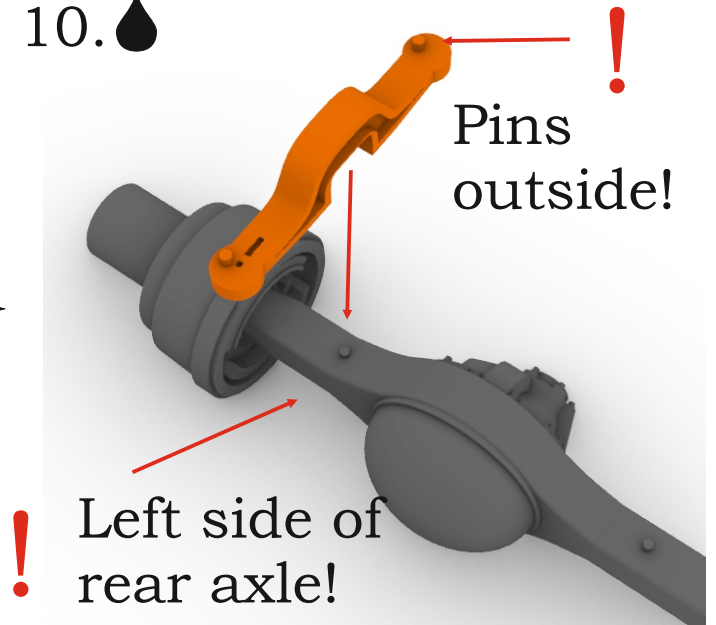
? Or



9.  x4



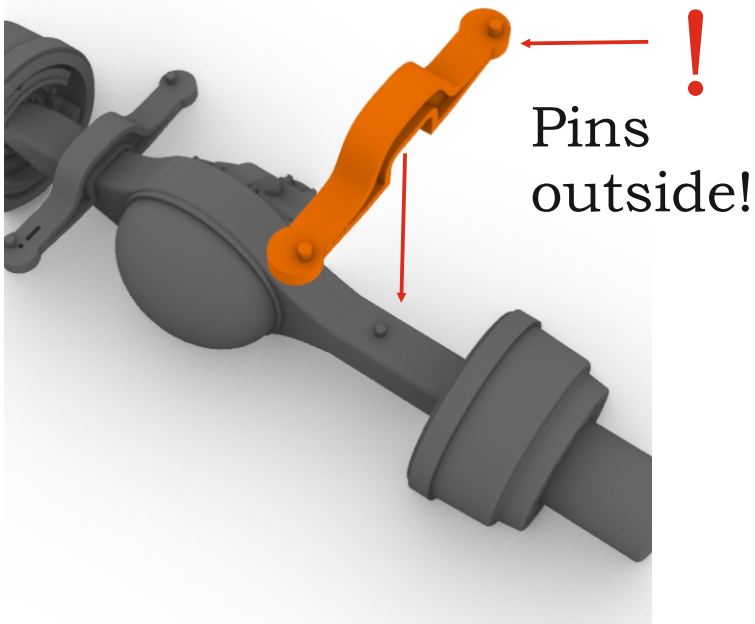
10. 



! Pins outside!

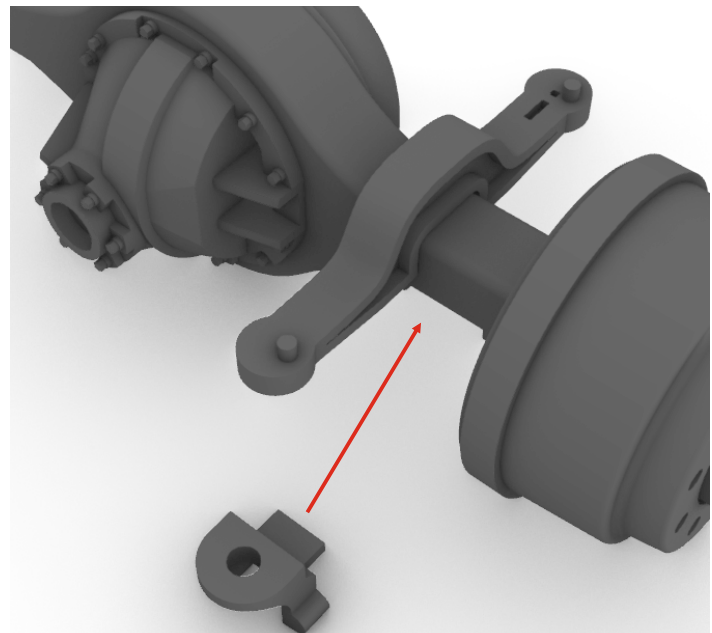
! Left side of rear axle!

11.  x3



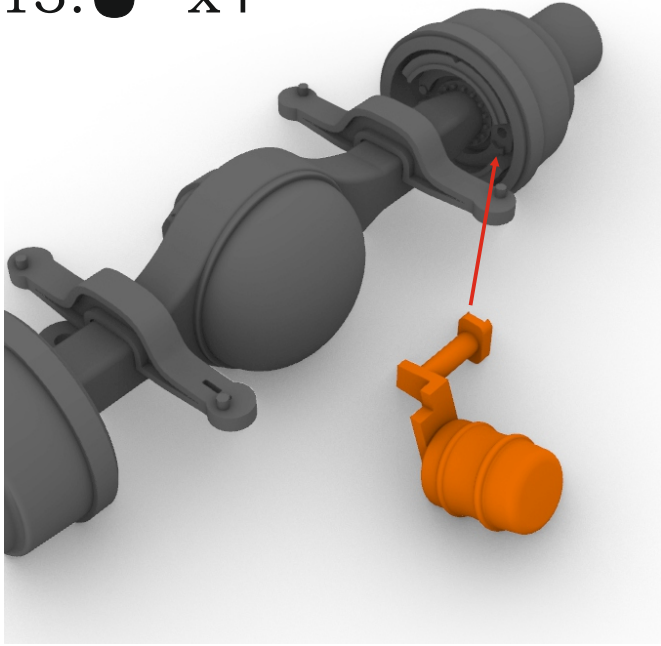
! Pins outside!

12.  x4

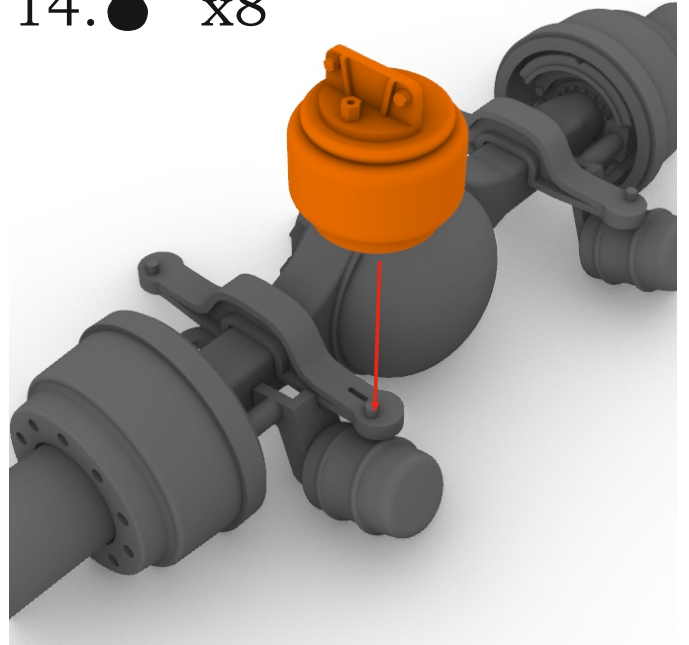


Air GL 400 rear suspension

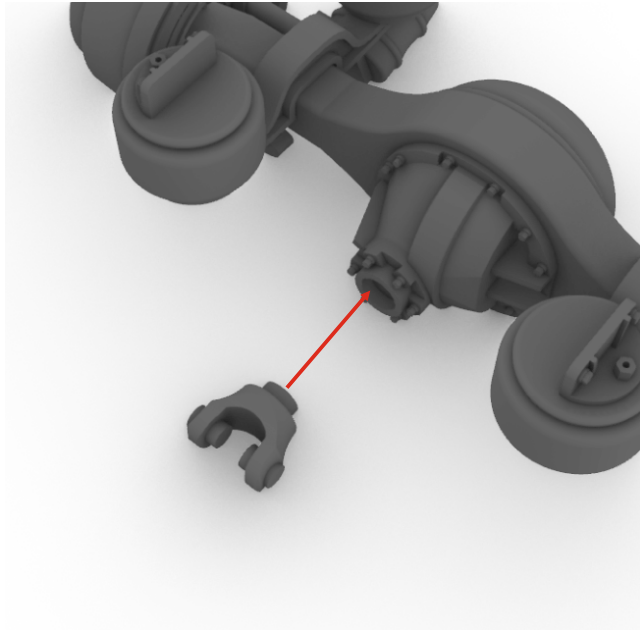
13.  x4



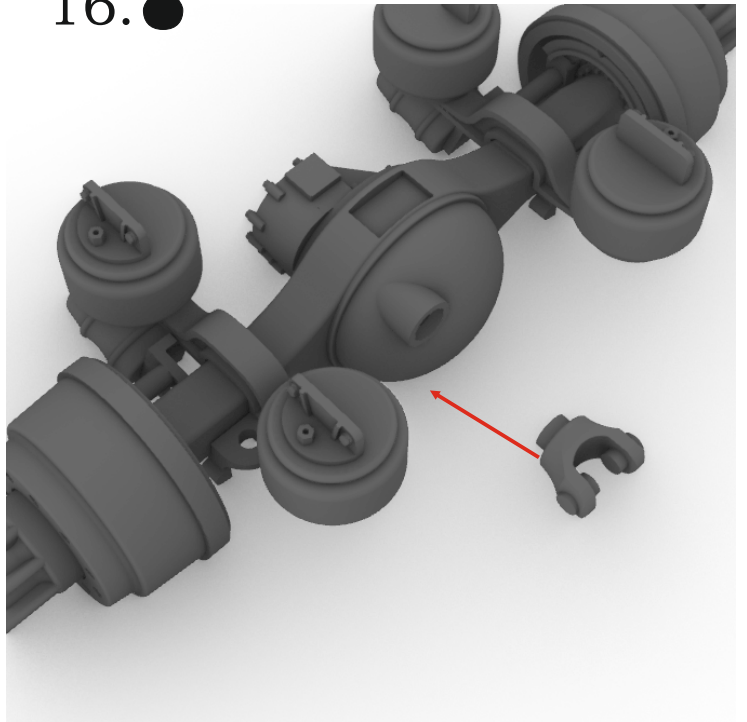
14.  x8



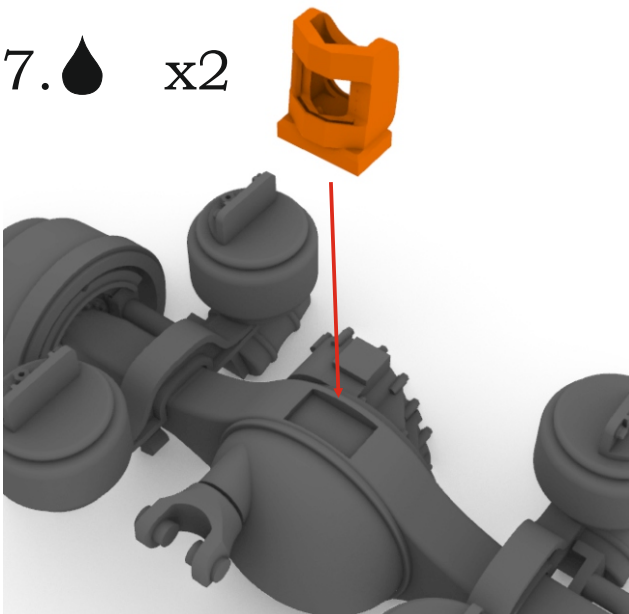
15. 



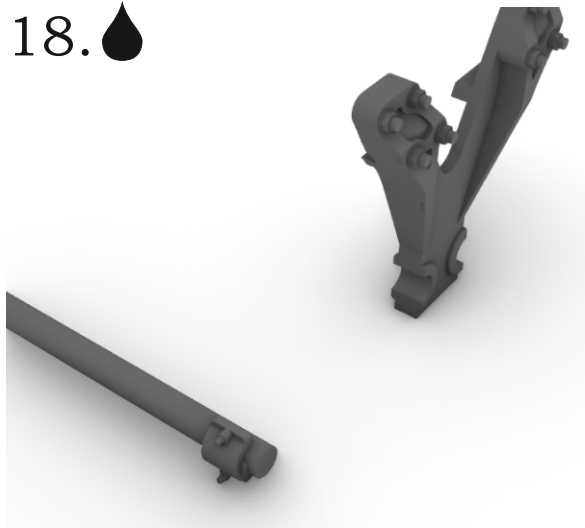
16. 



17.  x2

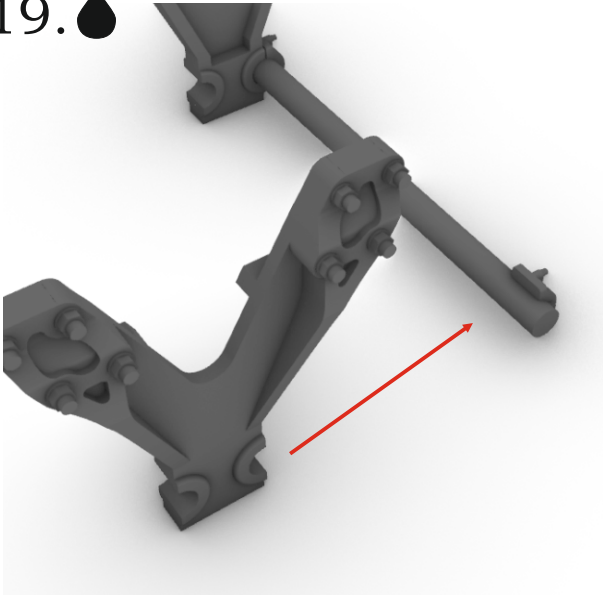


18. 

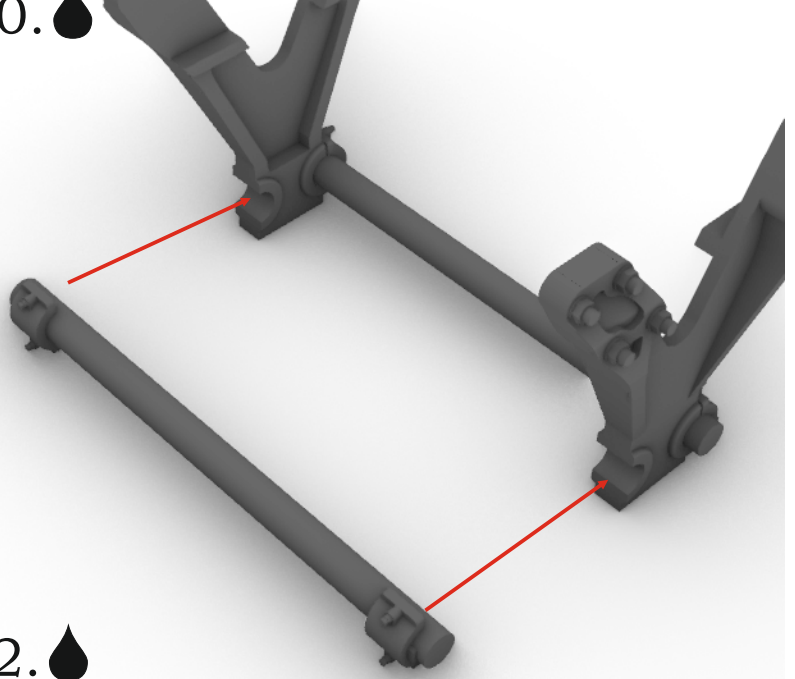


Air GL 400 rear suspension

19. 

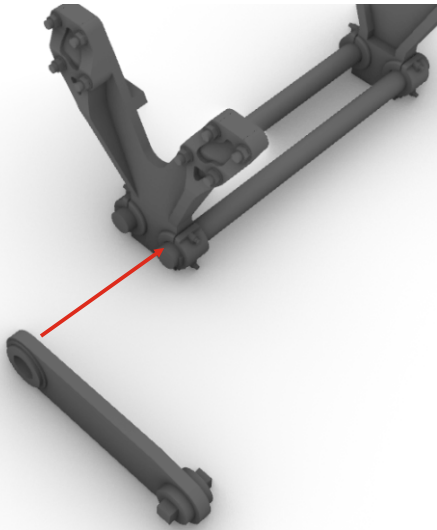



20. 

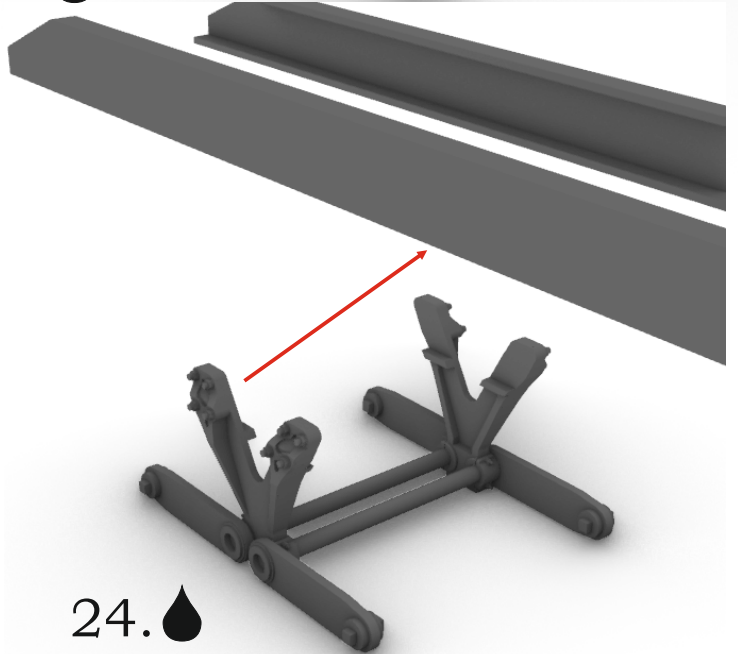


21. 

x4

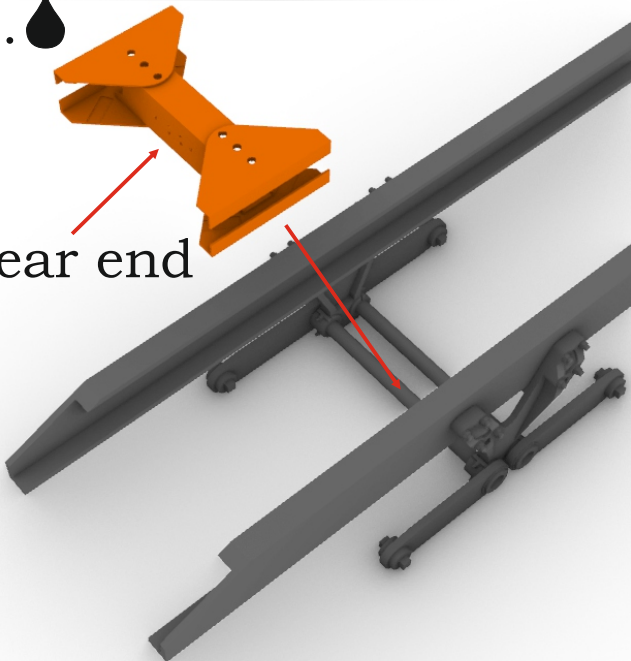



22. 



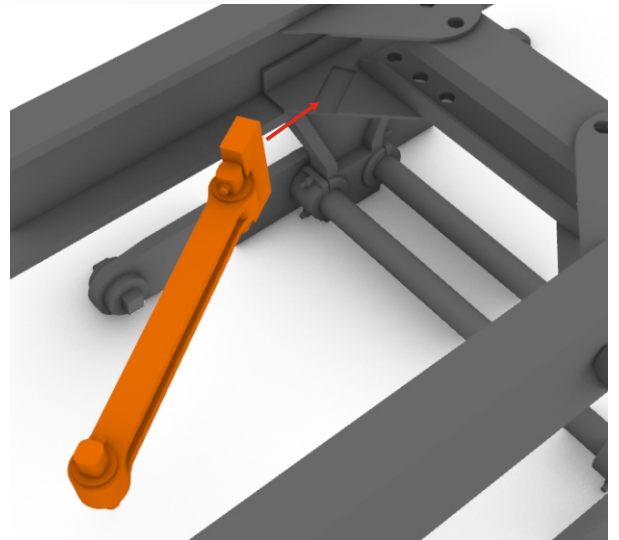
23. 

! Rear end



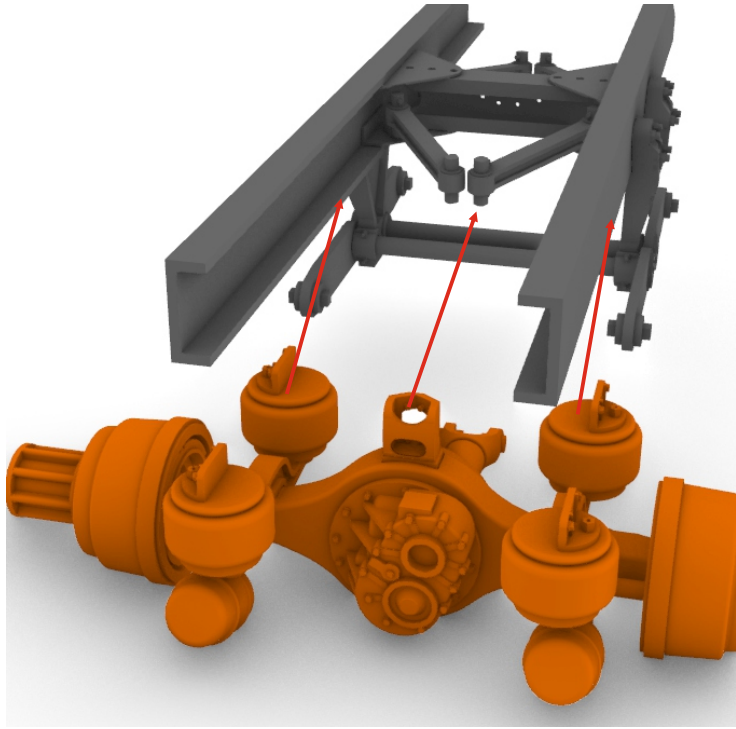
24. 

x4

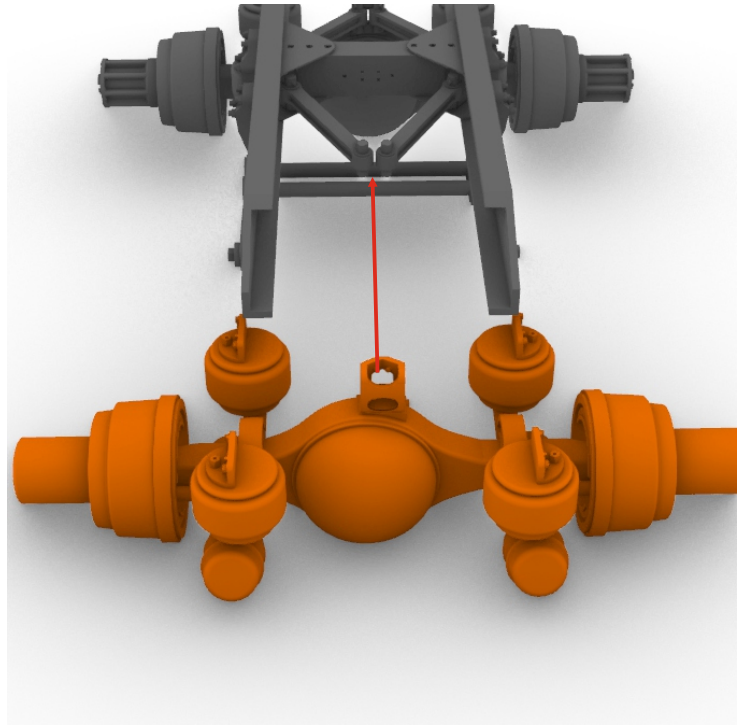


Air GL 400 rear suspension

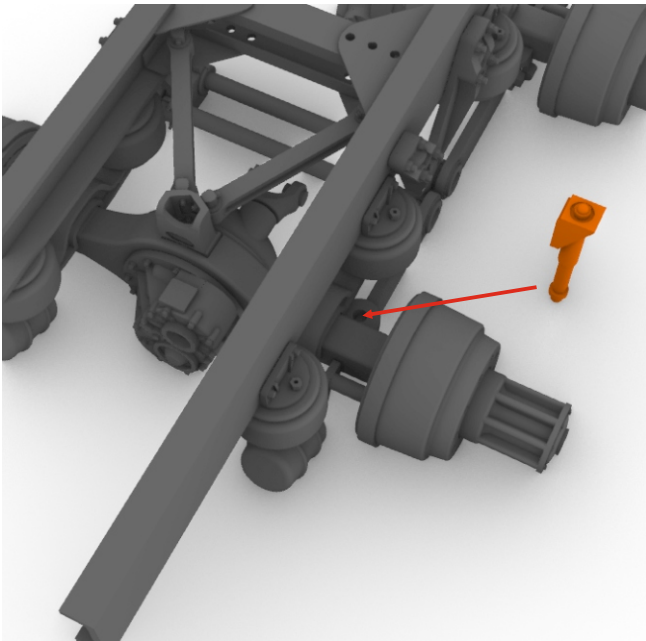
25. 



26. 



27.  x4



28. 

