

Front air suspension for Swedish truck Scale 1/24

Warning!

For the best result we recommend to use our “Chassis for Swedish truck” kits.

Please follow this instruction while assembling, otherwise you could face problems with assembling the model.


Photo-etched parts have sharp edges, please be careful.

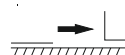
This model kit contains small parts and is not suitable for children.

For building this model some modelling skills are required.

Symbols:


 - glue parts;


 - do not glue parts;

 - bend parts;

 - attention;

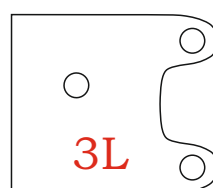
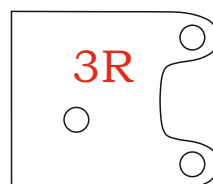
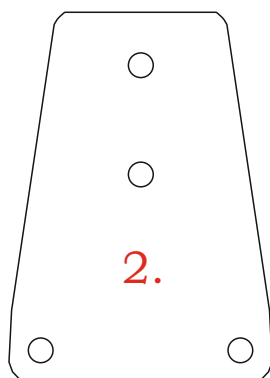
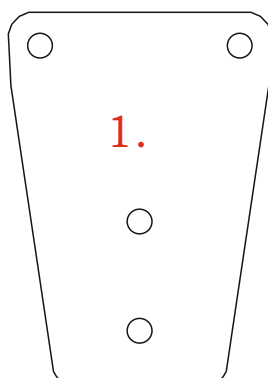
 - moving parts;

 - your choice;

 - cut;

Numbers of photo-etched parts

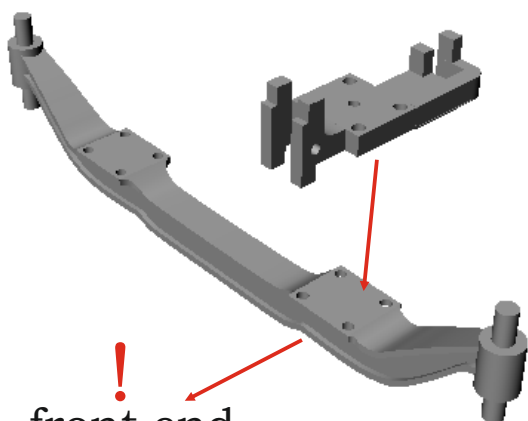
Front air suspension for
Swedish truck, 1/24



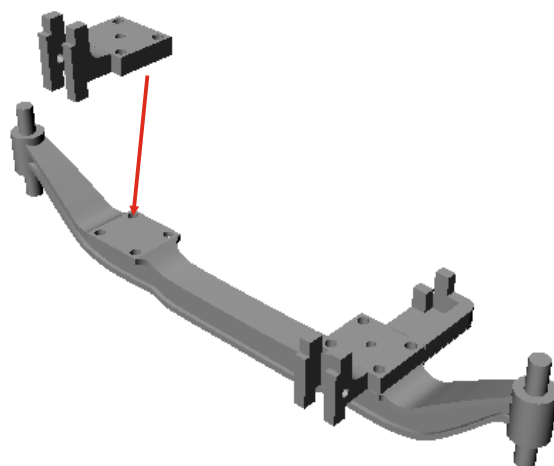
© 2015 by “A&N Model Trucks”

© 2015 by “A&N Model Trucks”

1. 

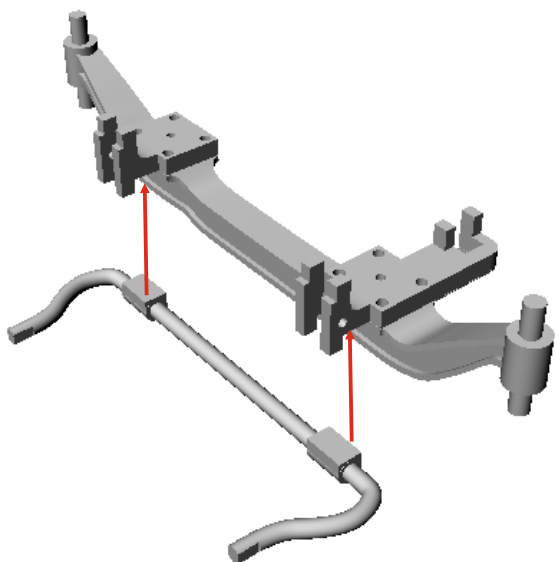


2. 

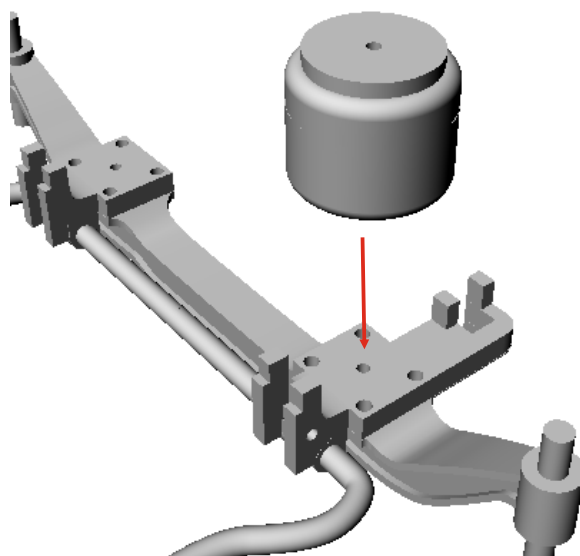



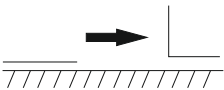
! front end

3. 

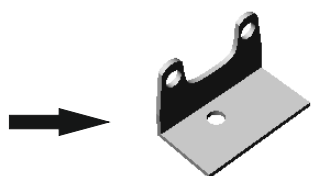


4.  x2

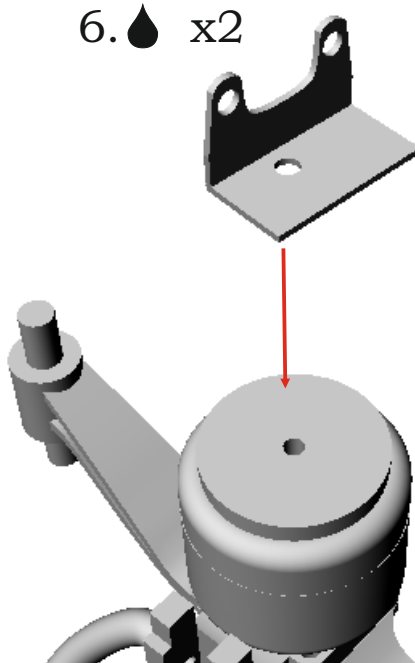


5.   x2

PE-parts #3R, 3L

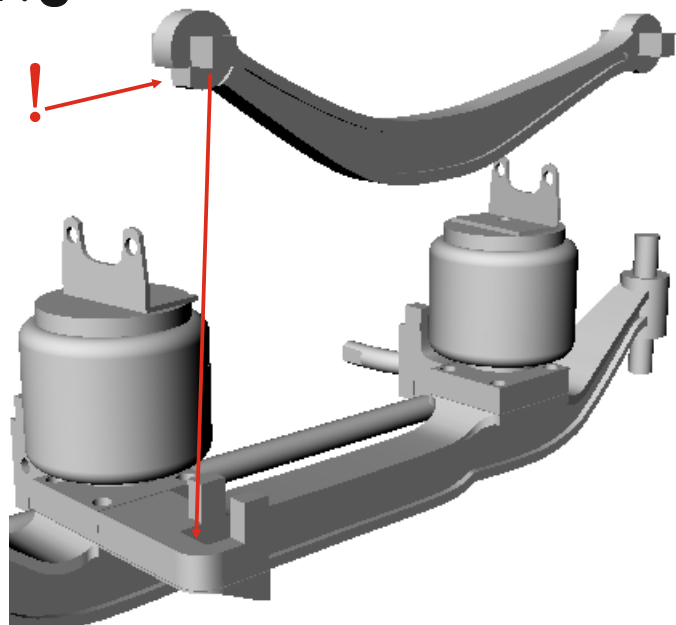


6.  x2

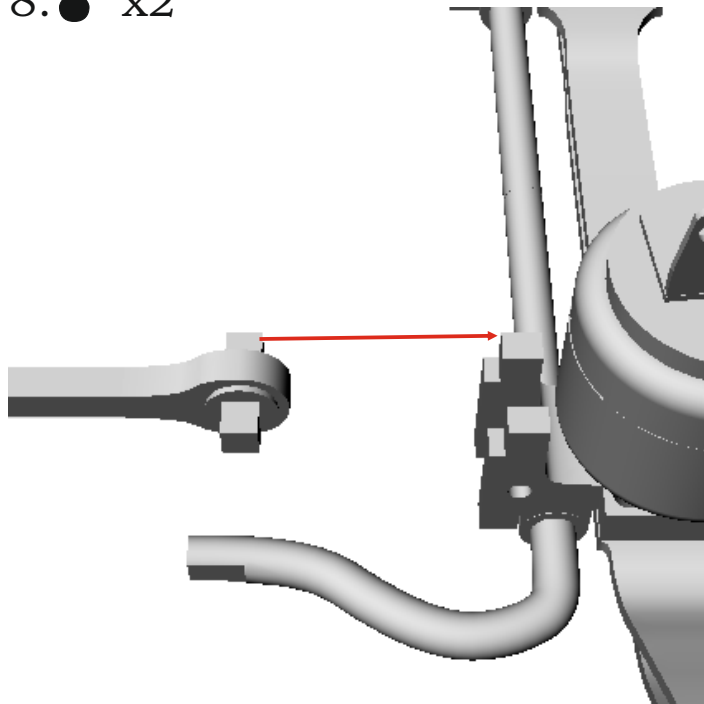


! 3R for right side;
3L for left side.

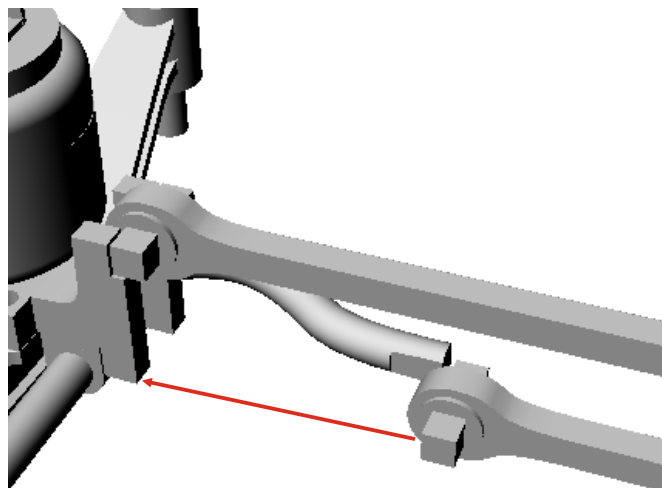
7. ●



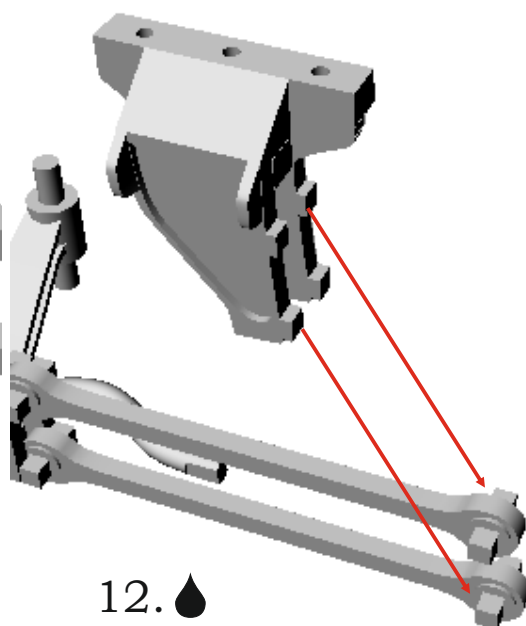
8. ● x2



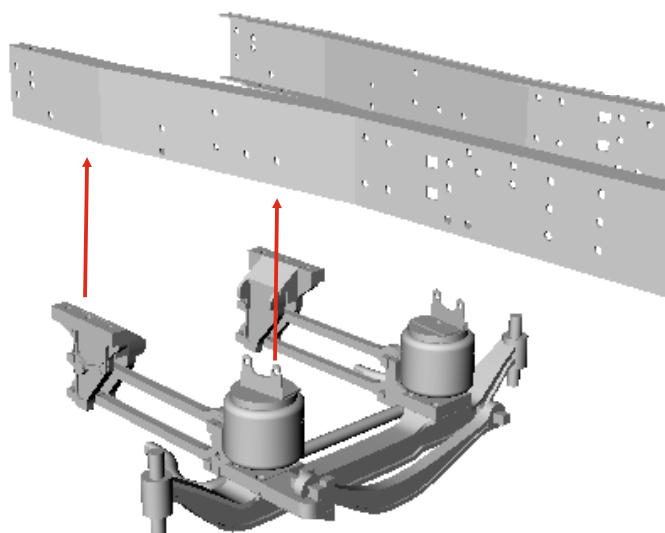
9. ● x2



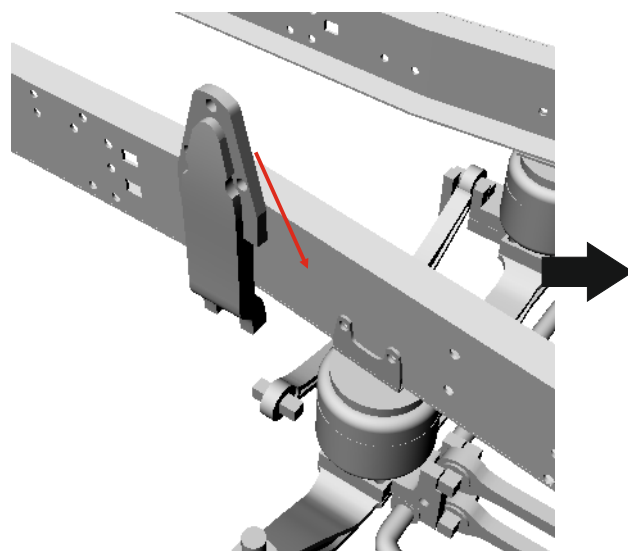
10. ● x2

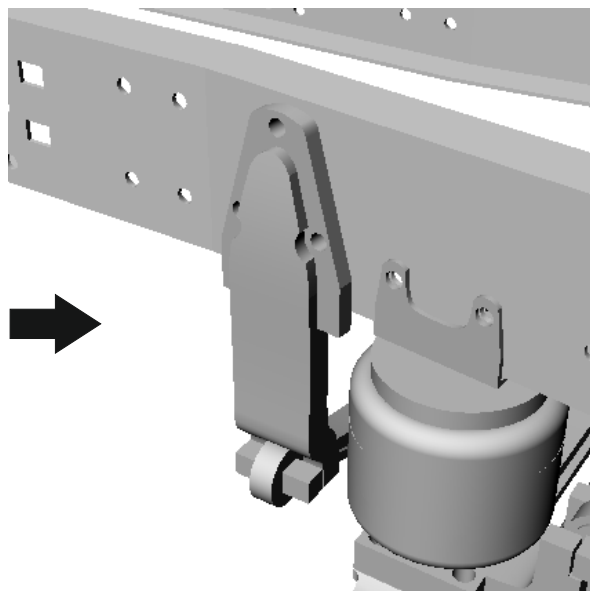


11. ●

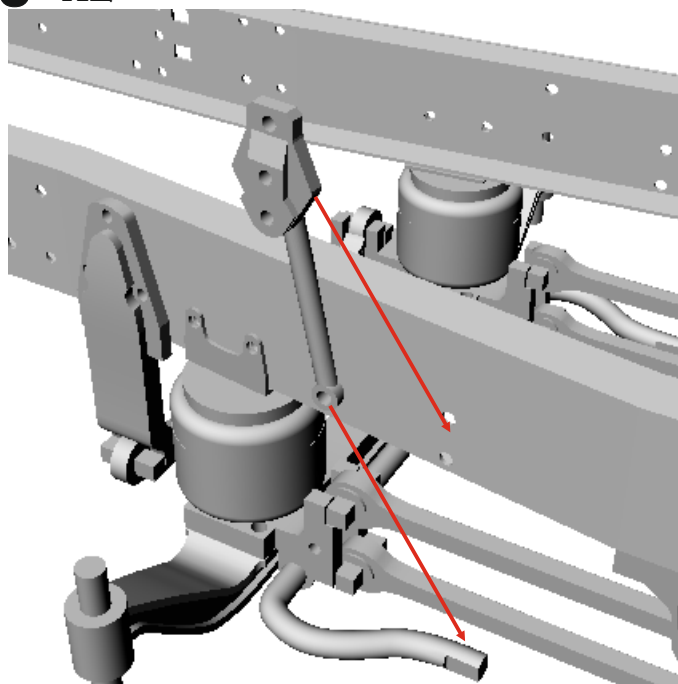


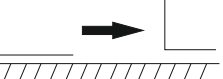
12. ●





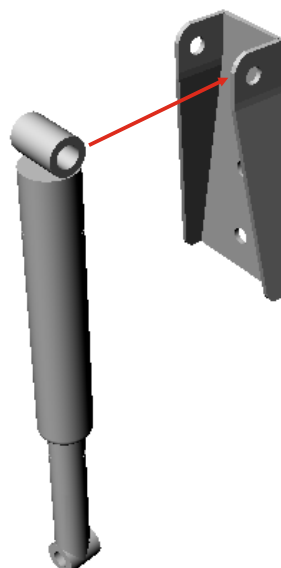
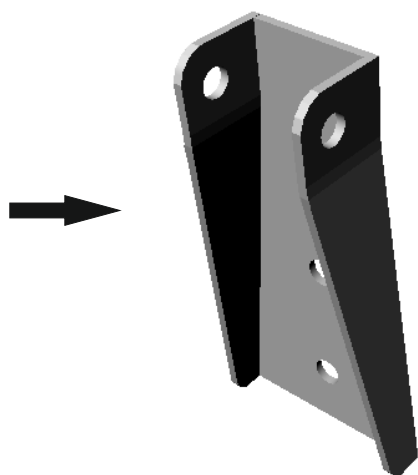
13.  x2



14.  x2

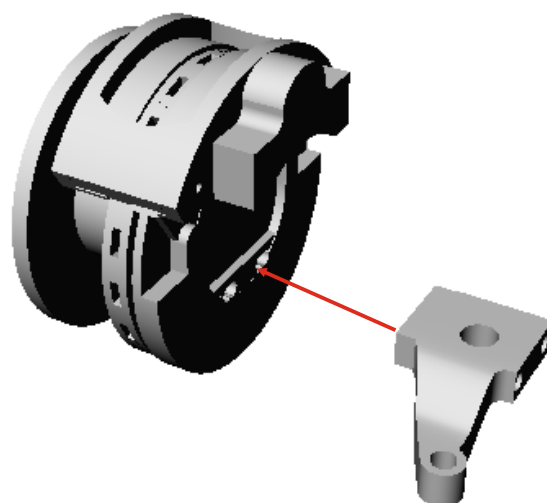
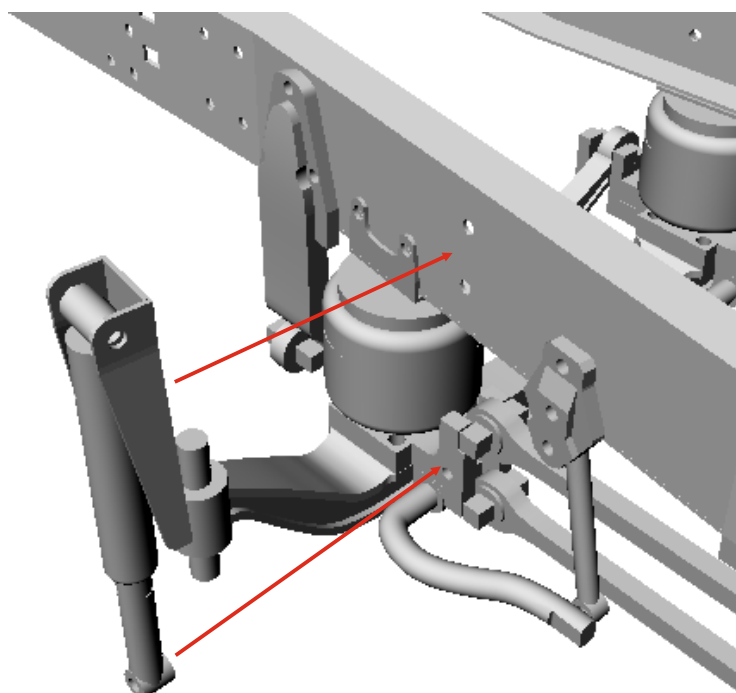
PE-parts #1, 2

15.  x2

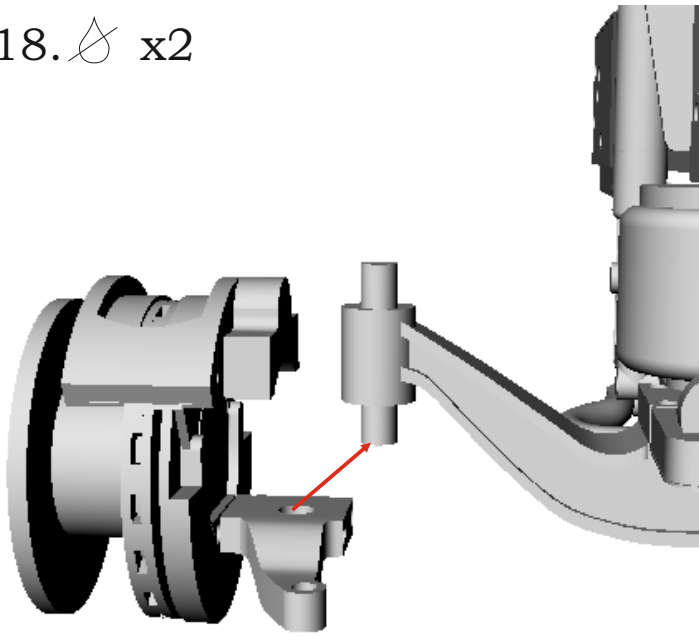


16.  x2

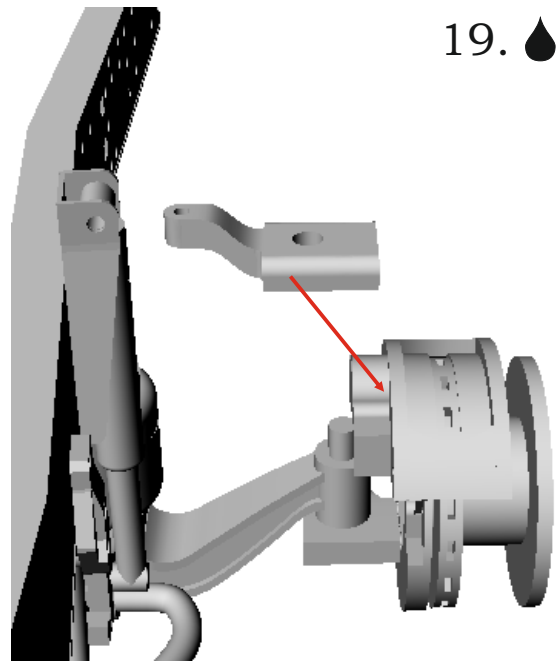
17.  x2



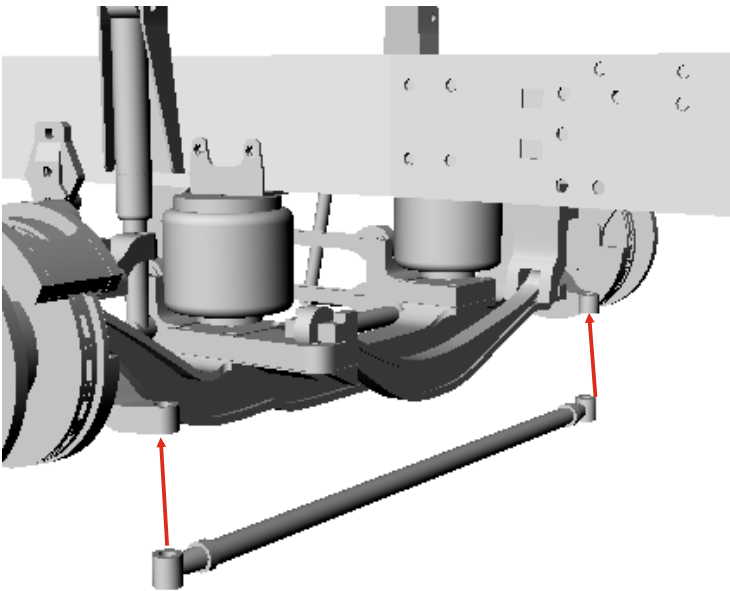
18.  x2




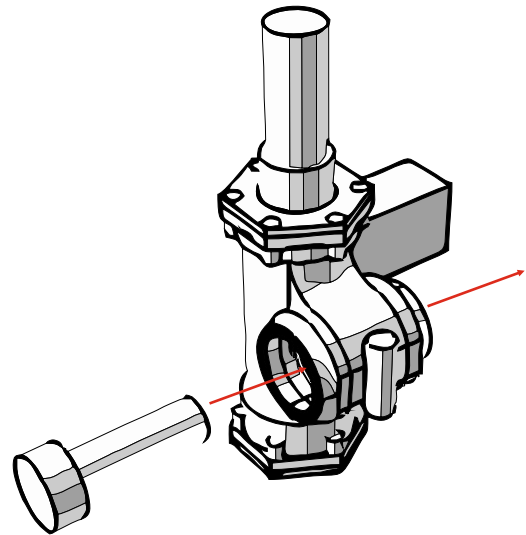
19.  x2



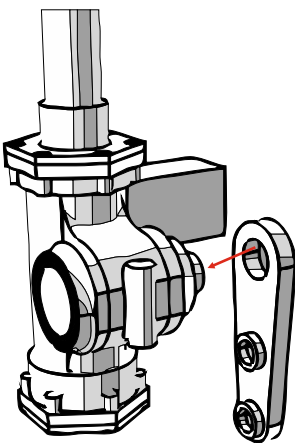
20. 




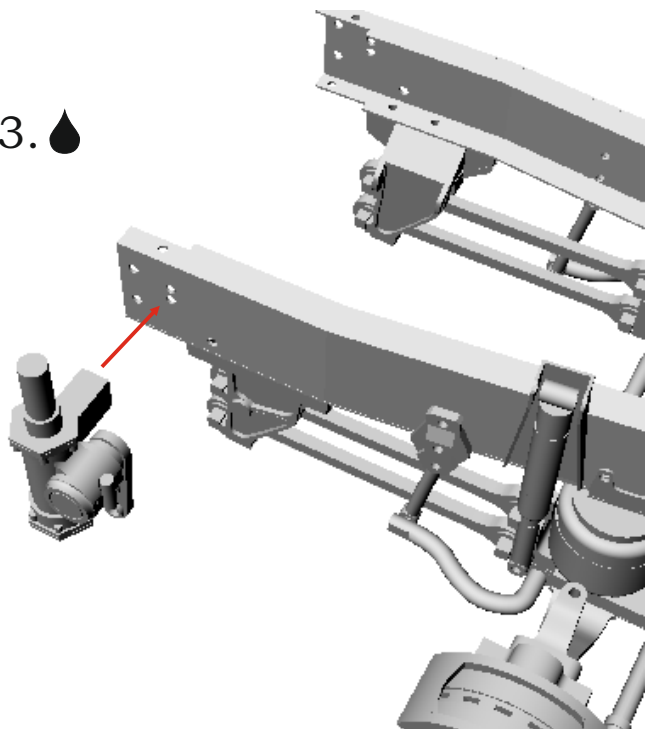
21. 



22. 



23. 



21. 